

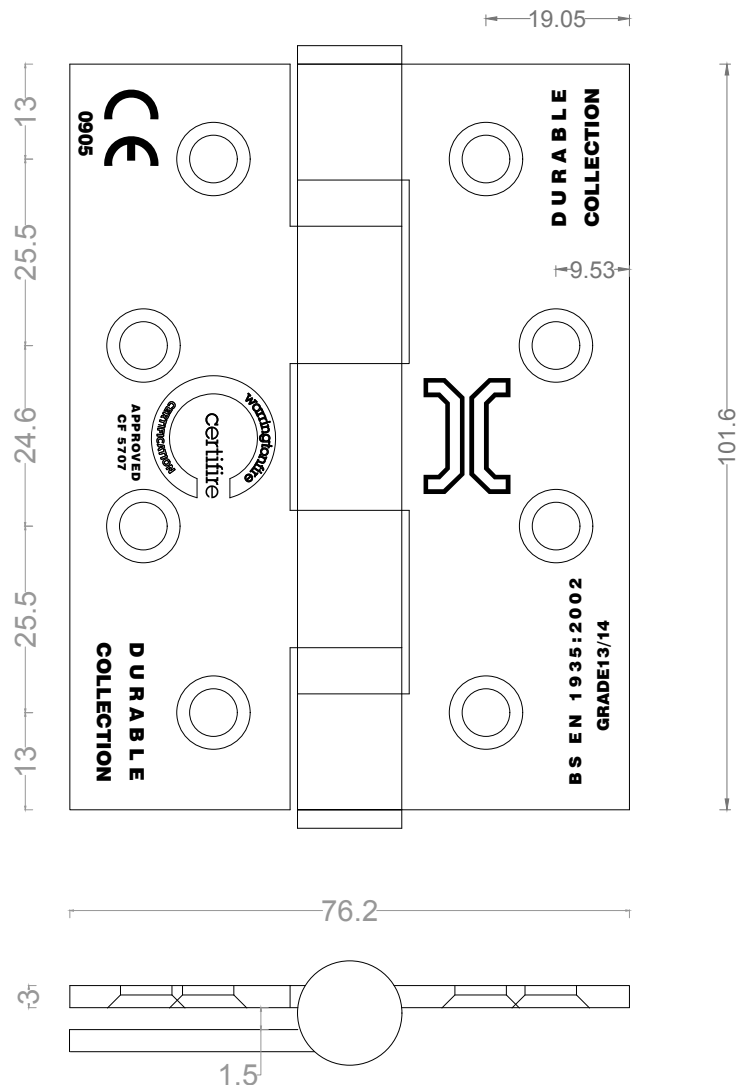
**BUTT HINGES CE/EN**

**ITEM CODE: HG433SSXXX & HG433SSXXX-14**  
**SEVERE DUTY STAINLESS STEEL 2 BALL BEARING**  
**BUTT HINGES**



Features:

- Area of application: For wooden or metal doors.
- Material: stainless steel EN 1.4301 (type SUS304), optional EN 1.4371 (type SUS201) or stainless steel EN 1.4401 (type SUS316).
- Clear/free gap: 1.5 mm.
- Maximum adjusted door weight: 120 kgs.
- Square corners, optional radius R10.
- Supplied with:
  - o For steel doors, 1 pair of hinge, 16 pcs flat head and countersunk steel screws (M5x12)
  - o For wood doors, 1 pair of hinge, 16 pcs flat head and countersunk wood screws (#10x31.75 mm)
- Tested and certified to BS EN 1634-1: 2014 and BS EN 1935:2002/AC:2003.
- CE marked, certificate # 0905-CPR-000575-01.
- CERTIFIRE, Assessment report CF5707.
- DoP (Declaration of Performance) available on website or on request.
- Standard finish: satin stainless steel (SSS). Other finishes are available upon request.
- Optional: Intumescent fire protection kit for wood doors.
- Hinge classification:
  - o Grade 13: 4-7-6-1-1-4-0-13
  - o Grade 14: 4-7-7-1-1-4-0-14



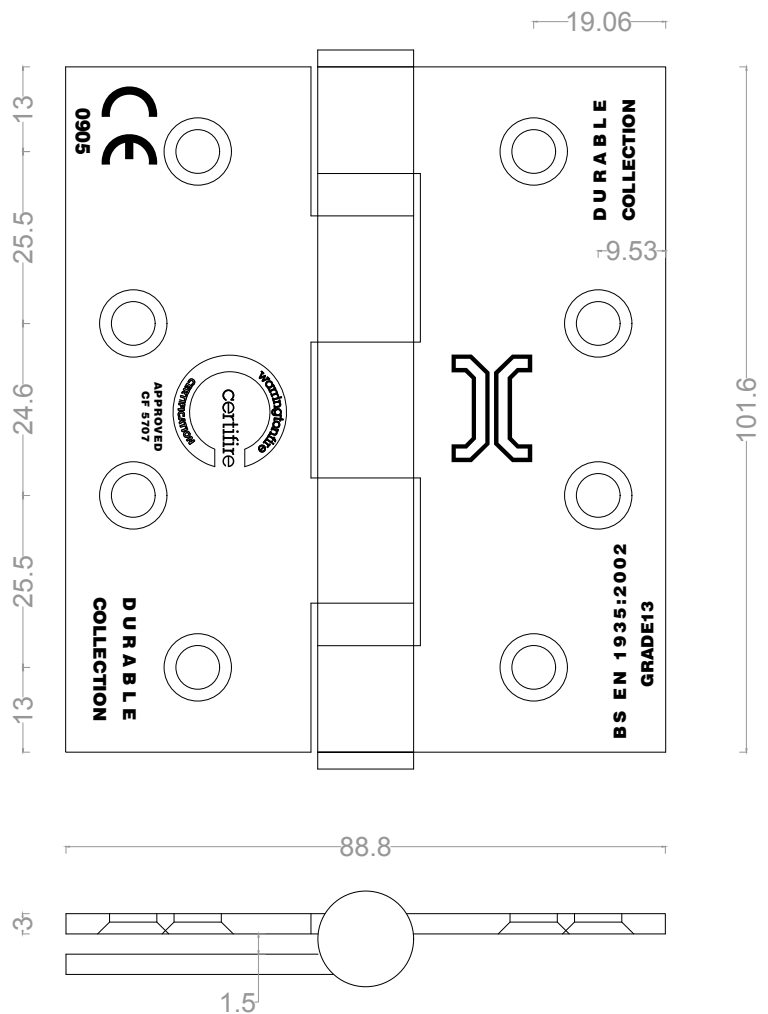
**ITEM CODE: HG43.53SSXXX**  
**SEVERE DUTY STAINLESS STEEL 2 BALL BEARING BUTT HINGES**



Features:

Area of application: For wooden or metal doors.

- Material: stainless steel EN 1.4301 (type SUS304), optional EN 1.4371 (type SUS201) or stainless steel EN 1.4401 (type SUS316).
- Clear/free gap: 1.5 mm.
- Maximum adjusted door weight: 120 kgs.
- Square corners, optional radius R10.
- Supplied with:
  - o For steel doors, 1 pair of hinge, 16 pcs flat head and countersunk steel screws (M5x12)
  - o For wood doors, 1 pair of hinge, 16 pcs flat head and countersunk wood screws (#10x31.75 mm)
- Tested and certified to BS EN 1634-1: 2014 and BS EN 1935:2002/AC:2003.
- CE marked, certificate # 0905-CPR-000575-01.
- CERTIFIRE, Assessment report CF5707.
- DoP (Declaration of Performance) available on website or on request.
- Standard finish: satin stainless steel (SSS). Other finishes are available upon request.
- Optional: Intumescent fire protection kit for wood doors.
- Hinge classification:
  - o Grade 13: 4-7-6-1-1-4-0-13

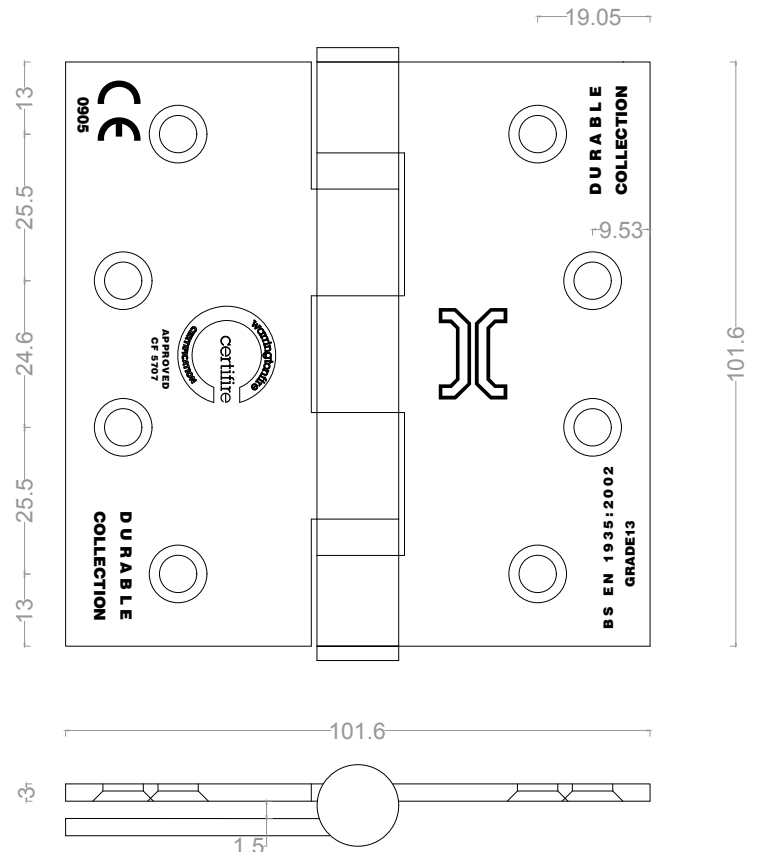


**ITEM CODE: HG443SSXXX  
SEVERE DUTY STAINLESS STEEL 2 BALL BEARING  
BUTT HINGES**



Features:

- Area of application: For wooden or metal doors.
- Material: stainless steel EN 1.4301 (type SUS304), optional EN 1.4371 (type SUS201) or stainless steel EN 1.4401 (type SUS316).
- Clear/free gap: 1.5 mm.
- Maximum adjusted door weight: 120 kgs.
- Square corners, optional radius R10.
- Supplied with:
  - o For steel doors, 1 pair of hinge, 16 pcs flat head and countersunk steel screws (M5x12)
  - o For wood doors, 1 pair of hinge, 16 pcs flat head and countersunk wood screws (#10x31.75 mm)
- Tested and certified to BS EN 1634-1: 2014 and BS EN 1935:2002/AC:2003.
- CE marked, certificate # 0905-CPR-000575-01.
- CERTIFIRE, Assessment report CF5707.
- DoP (Declaration of Performance) available on website or on request.
- Standard finish: satin stainless steel (SSS). Other finishes are available upon request.
- Optional: Intumescent fire protection kit for wood doors.
- Hinge classification:
  - o Grade 13: 4-7-6-1-1-4-0-13

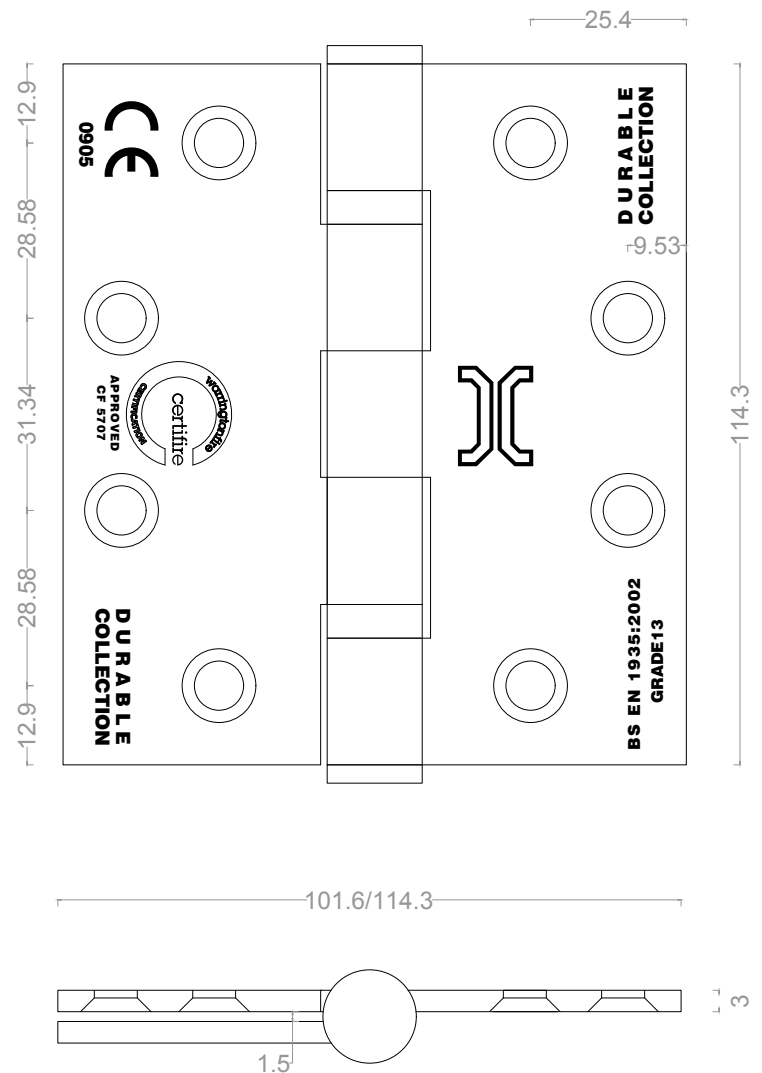


**ITEM CODE: HG4.543SSXXX & HG4.54.53SSXXX  
SEVERE DUTY STAINLESS STEEL 2 BALL BEARING  
BUTT HINGES**



Features:

- Area of application: For wooden or metal doors.
- Material: stainless steel EN 1.4301 (type SUS304), optional EN 1.4371 (type SUS201) or stainless steel EN 1.4401 (type SUS316).
- Clear/free gap: 1.5 mm.
- Maximum adjusted door weight: 120 kgs.
- Square corners, optional radius R10.
- Supplied with:
  - o For steel doors, 1 pair of hinge, 16 pcs flat head and countersunk steel screws (M5x12)
  - o For wood doors, 1 pair of hinge, 16 pcs flat head and countersunk wood screws (#10x31.75 mm)
- Tested and certified to BS EN 1634-1: 2014 and BS EN 1935:2002/AC:2003.
- CE marked, certificate # 0905-CPR-000575-01.
- CERTIFIRE, Assessment report CF5707.
- DoP (Declaration of Performance) available on website or on request.
- Standard finish: satin stainless steel (SSS). Other finishes are available upon request.
- Optional: Intumescent fire protection kit for wood doors.
- Hinge classification:
  - o Grade 13: 4-7-6-1-1-4-0-13

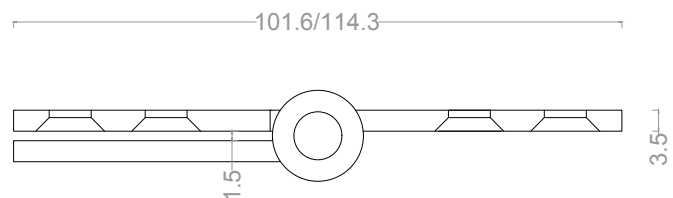
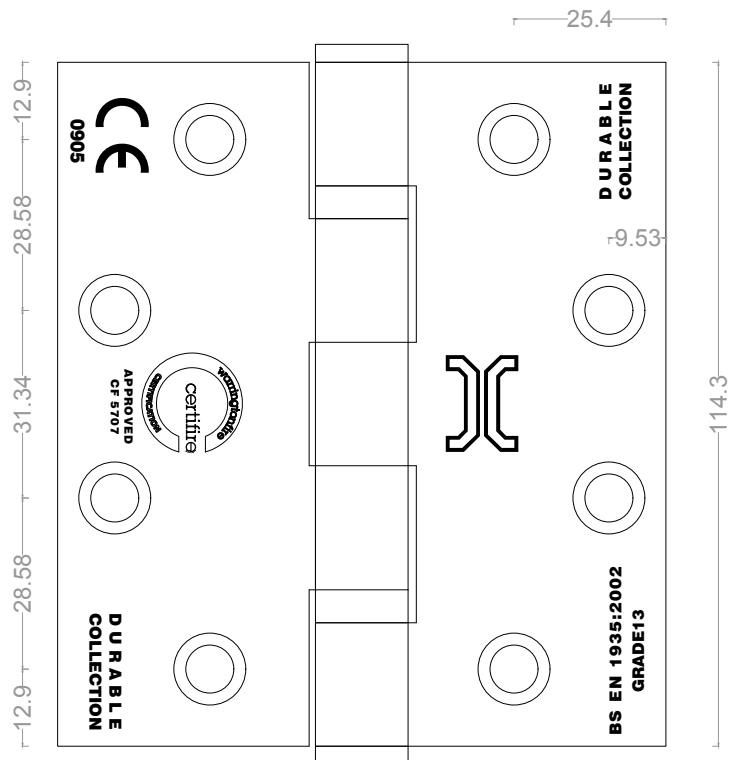


**ITEM CODE: HG4.543.5SSXXX & HG4.54.53.5SSXXX  
SEVERE DUTY STAINLESS STEEL 2 BALL BEARING BUTT  
HINGES**



Features:

- Area of application: For wooden or metal doors.
- Material: stainless steel EN 1.4301 (type SUS304), optional EN 1.4371 (type SUS201) or stainless steel EN 1.4401 (type SUS316).
- Clear/free gap: 1.5 mm.
- Maximum adjusted door weight: 120 kgs.
- Square corners, optional radius R10.
- Supplied with:
  - o For steel doors, 1 pair of hinge, 16 pcs flat head and countersunk steel screws (M5x12)
  - o For wood doors, 1 pair of hinge, 16 pcs flat head and countersunk wood screws (#10x31.75 mm)
- Tested and certified to BS EN 1634-1: 2014 and BS EN 1935:2002/AC:2003.
- CE marked, certificate # 0905-CPR-000575-01.
- CERTIFIRE, Assessment report CF5707.
- DoP (Declaration of Performance) available on website or on request.
- Standard finish: satin stainless steel (SSS). Other finishes are available upon request.
- Optional: Intumescent fire protection kit for wood doors.
- Hinge classification:
  - o Grade 13: 4-7-6-1-1-4-0-13

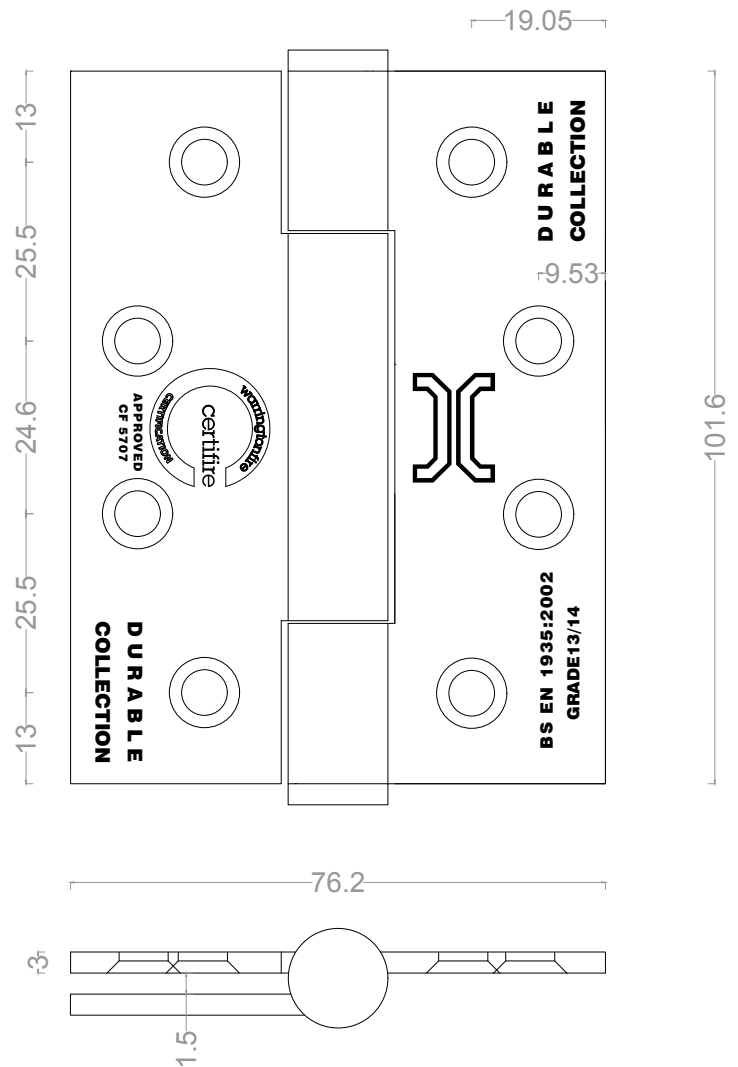


**ITEM CODE: HG433SSXXCB & HG433SSXXCB-14  
SEVERE DUTY STAINLESS STEEL THREE KNUCKLE  
CONCEALED BALL BEARING BUTT HINGES**



Features:

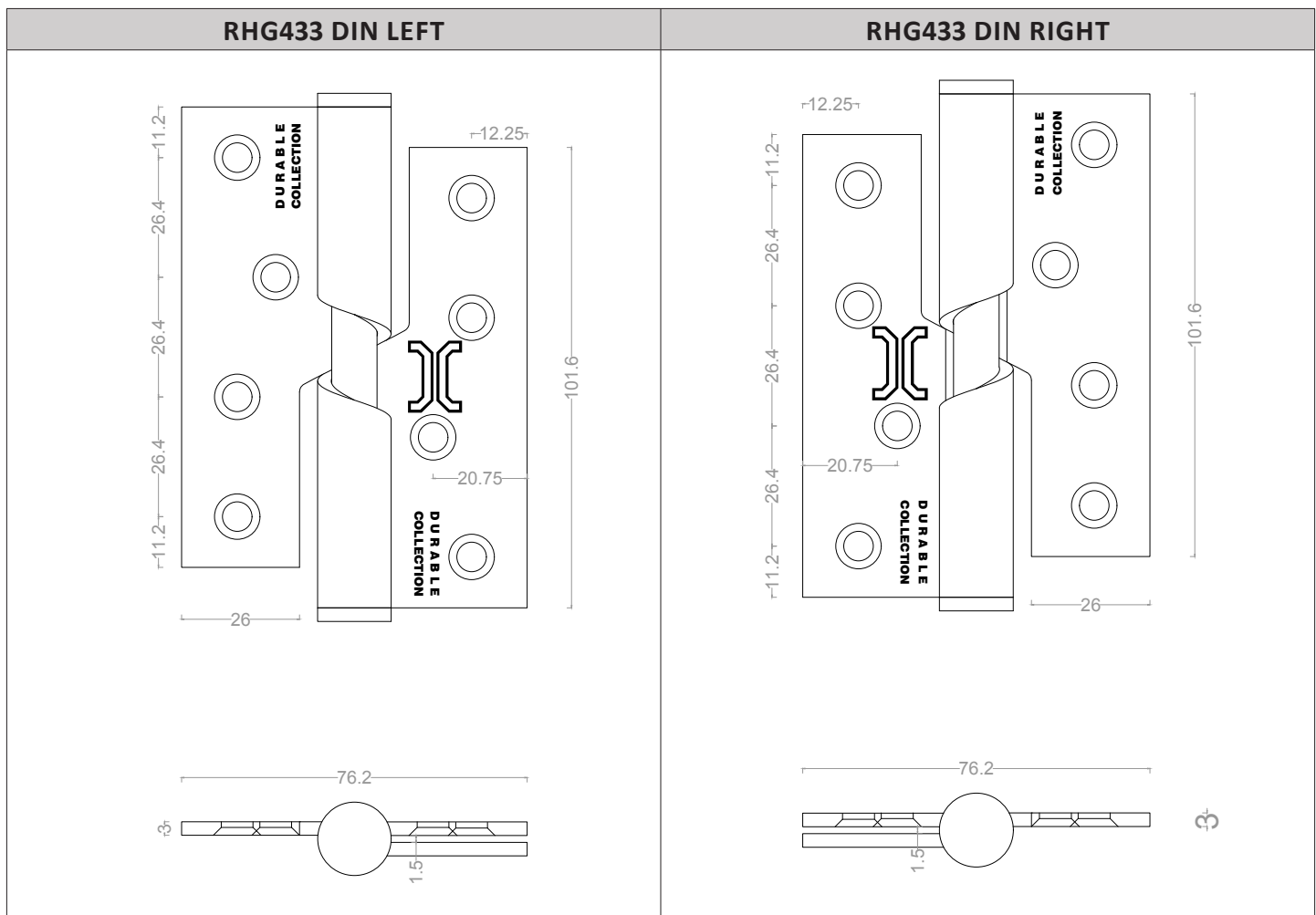
- Area of application: For wooden or metal doors.
- Material: stainless steel EN 1.4301 (type SUS304), optional EN 1.4371 (type SUS201) or stainless steel EN 1.4401 (type SUS316).
- Clear/free gap: 1.5 mm.
- Maximum adjusted door weight: 120 kgs.
- Square corners, optional radius R10.
- Maintenance free.
- Supplied with:
  - o For steel doors, 1 pair of hinge, 16 pcs flat head and countersunk steel screws (M5x12)
  - o For wood doors, 1 pair of hinge, 16 pcs flat head and countersunk wood screws (#10x31.75 mm)
- Tested and certified to BS EN 1634-1: 2014 and BS EN 1935:2002/AC:2003.
- CERTIFIRE, Assessment report CF5707.
- Standard finish: satin stainless steel (SSS). Other finishes are available upon request.
- Optional: Intumescent fire protection kit for wood doors.
- Hinge classification:
  - o Grade 13: 4-7-6-1-1-4-0-13
  - o Grade 14: 4-7-7-1-1-4-0-14



## ITEM CODE: RHG433 SERIES RISING BUTT HINGES

### Features:

- Area of application: For wooden or metal doors.
- Material: stainless steel EN 1.4301 (type SUS304), optional EN 1.4371 (type SUS201) or stainless steel EN 1.4401 (type SUS316).
- Clear/free gap: 1.5 mm. Fixed pin.
- Maximum adjusted door weight: 50 kgs.
- Square corners, 2 versions: DIN RIGHT or DIN LEFT.
- Hinges cause the doors to shut.
- Special door head/frame may be required to allow the leaf to rise.
- To ensure correct working, 2 rising hinges must be fitted with screws supplied.
- Supplied with: 1 pair of rising hinge, 16 pcs of flat head and countersunk wood screws (#10x31.75 mm).
- Standard finish: satin stainless steel (SSS). Other finishes are available upon request.





**ITEM CODE: HG433SSXXXS**  
**SECURITY SEVERE DUTY STAINLESS STEEL 2 BALL BEARING  
 BUTT HINGES**



**EN 1935**

Features:

- Area of application: For wooden or metal doors.
- Material: stainless steel EN 1.4301 (type SUS304), optional EN 1.4371 (type SUS201) or stainless steel EN 1.4401 (type SUS316).
- Clear/free gap: 1.5 mm.
- Maximum adjusted door weight: 120 kgs.
- Square corners, optional radius R10.
- Supplied with:
  - o For steel doors, 1 pair of hinge, 16 pcs flat head and countersunk steel screws (M5x12)
  - o For wood doors, 1 pair of hinge, 16 pcs flat head and countersunk wood screws (#10x31.75 mm)
- Tested and certified to BS EN 1634-1: 2014 and BS EN 1935:2002/AC:2003.
- CERTIFIRE, Assessment report CF5707.
- Standard finish: satin stainless steel (SSS). Other finishes are available upon request.
- Optional: Intumescent fire protection kit for wood doors.
- Hinge classification:
  - o Grade 13: 4-7-6-1-1-4-0-13

