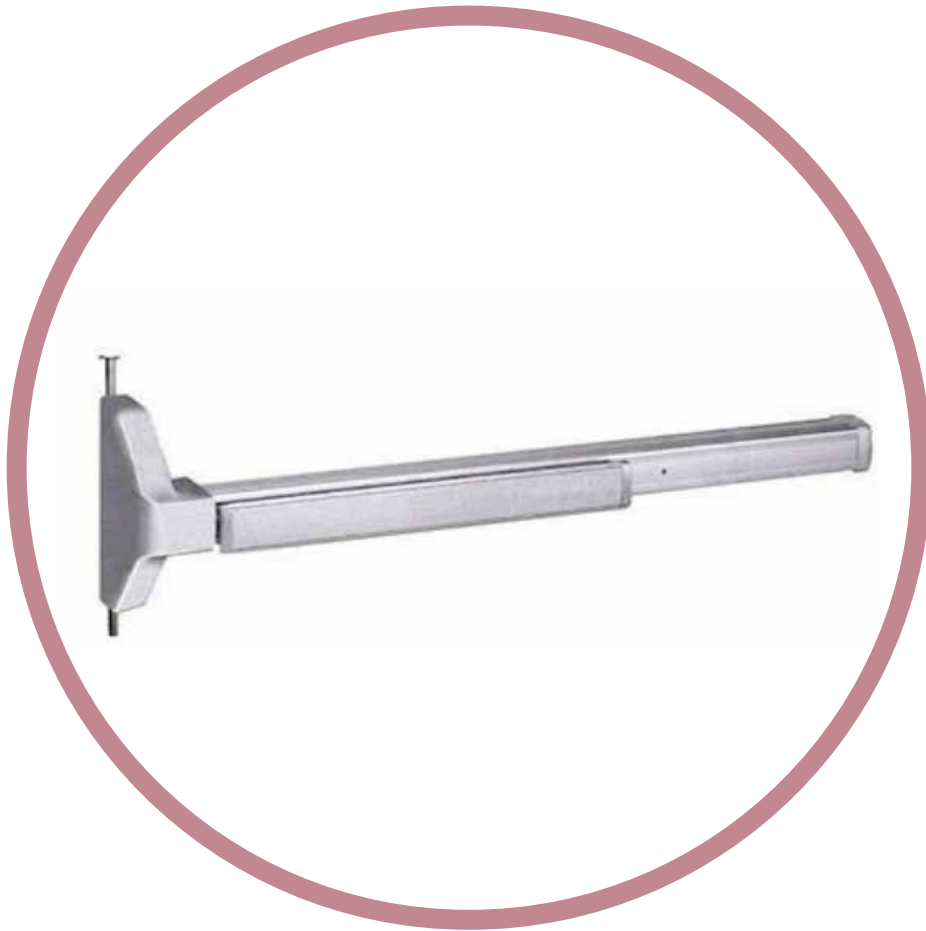


***ANSI/UL ARCHITECTURAL
HARDWARE***



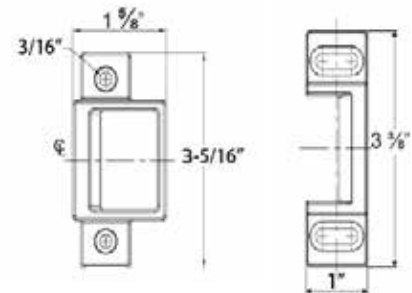
FIRE EXIT HARDWARE SERIES NS

ITEM CODE: 1040RTNS & 1330CVRNS SERIES



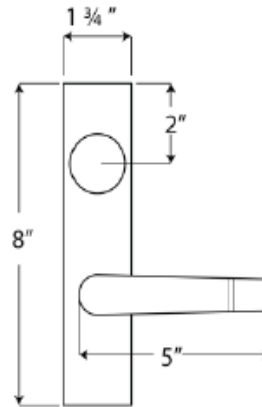
FEATURES:

- Narrow stile fire exit hardware, Rim Type (1040RTNS) and concealed vertical rod (1330CVRNS).
- UL10C up to 3 hrs. fire labelled installations for all types of 4'x 8' single doors and 8'x 8' double doors.
- UL file #: GXHX.R25171
- Tested successfully to meet UL10C, UL 305 & ANSI A156.3-2014, Grade 1 (1040RTNS) and Grade 2 (1330CVRNS).
- BHMA Certified.
- For use in institutions, schools, universities, commercial buildings where heavy-duty operation is a requirement.
- Doors thickness: 1 3/4" (44.45 mm) thickness standard, optional 2 1/4" (57.15 mm) thickness. Minimum stile width 1 3/4 inch required for single or double door application using standard escutcheon trim or knob.
- Mounting rail assembly: Heavy-duty gauge extruded aluminum body with stainless steel push rail/pad. Optional aluminum mounting rail, sliding shim & end cap in US15 finish at additional cost.
- End cap: Brass, bronze or stainless steel construction.
- Head cover: Non-ferrous plated material.
- Top Chassis: Steel.
- Furnished with wood and machine screws. Thru bolts are included & standard packaging on fire rated devices.
- Non handed, universal
- Latch bolt: Stainless steel 3/4" (19 mm) projection.
- Spring: Stainless steel.
- Touch bar projection: Neutral 3 5/8" (92mm), depressed 2 7/8" ((73mm)
- Standard packed surfaced or mortised strike, optional no mortise required strike is available.
- Push pad is available in two lengths: For doors width up to 36" (914.4 mm) - mounting rail can be cut to fit doors up to 30" (762 mm), and for doors width up to 48" (1219.2 mm) - mounting rail can be cut to fit doors to up to 36" (914.4 mm)
- Dogging: Allen-type key furnished available on non-fire labelled devices
- DELRK (electrified latch retraction kit), DREXKIT (Request to Exit kit) & DLBMKIT (Latch Bolt Monitoring kit) signal switches are available
- Standard finish: US32D
- Other finishes are available upon request



EXTERNAL TRIM ESCUTCHEON TRIM DT014 FOR 1040RTNS

- Rigid, non-clutch mechanism.
- Double heavy-duty spring support to prevent sagging and enhance operation.
- Grade 1, thru-bolted design. Easily field reversible.
- Hardened steel heavy-duty tailpiece.
- DT014: Rigid entrance, key locks or unlocks escutcheon trim, operates as classroom function.
- DT014S: Rigid storeroom, key unlocks lever, lever retracts latch bolt, otherwise always locked.
- DT014P: Without cylinder, passage, trim always operable and free.
- DT014D: Dummy escutcheon trim, one sided.
- Keyway: Standard 6 pins, mortise cylinder. Available 6 or 7 pins SFIC.
- Standard finish US26D



EXTERNAL TRIM ESCUTCHEON TRIM DT015 FOR 1330CVRNS

- Rigid, non-clutch mechanism.
- Double heavy-duty spring support to prevent sagging and enhance operation.
- Grade 1, thru-bolted design. Easily field reversible.
- Hardened steel heavy-duty tailpiece.
- DT015: Rigid entrance, key locks or unlocks escutcheon trim, operates as classroom function.
- DT015S: Rigid storeroom, key unlocks lever, lever retracts latch bolt, otherwise always locked.
- DT015P: Without cylinder, passage, trim always operable and free.
- DT015D: Dummy escutcheon trim, one sided.
- Keyway: Standard 6 pins, mortise cylinder. Available 6 or 7 pins SFIC.
- Standard finish US26D

