

***ANSI/UL ARCHITECTURAL
HARDWARE***



FIRE EXIT HARDWARE SERIES FEH

ITEM CODE: 1000RT SERIES



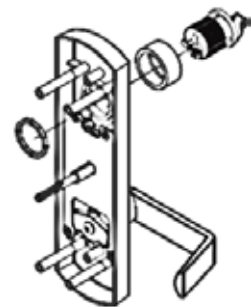
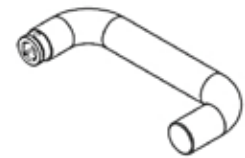
FEATURES:

- Fire exit hardware, Rim Type.
- UL10C up to 3 hrs. fire labelled installations for all types of 4'x 8' single doors and 8'x 8' double doors.
- UL file #: GXHX.R25171
- Tested successfully to meet UL10C, UL 305 & ANSI A156.3-2014, Grade 1.
- For use in institutions, schools, universities, commercial buildings where heavy-duty operation is a requirement.
- Doors thickness: 1 3/4" (44.45 mm) thickness standard, optional 2 1/4" (57.15 mm) thickness. 4 1/2" (114.3 mm) minimum stile width required for single or double door application using standard escutcheon trim or knob. Backset: 2 3/4" (69.85mm)
- Mounting rail assembly: Heavy-duty gauge extruded aluminum body with stainless steel push rail/pad. Optional aluminum mounting rail, sliding shim & end cap in US15 finish at additional cost.
- End cap: Brass, bronze or stainless steel construction.
- Head cover: Non-ferrous plated material. Cover stock hollow metal doors with type 161 door cut out.
- Top Chassis: Steel.
- Furnished with wood and machine screws. Thru bolts are included & standard packaging on fire rated devices.
- Non handed, universal
- Latch bolt: Stainless steel 3/4" (19 mm) projection with anti-pick feature.
- Spring: Stainless steel.
- Touch bar projection: Neutral 3 5/8" (92mm), depressed 2 7/8" ((73mm)
- Overlapping strike (SPD159SN) for inactive leaf (to be ordered separately)
- Push pad is available in two lengths: For doors width up to 36" (914.4 mm) - mounting rail can be cut to fit doors up to 30" (762 mm), and for doors width up to 48" (1219.2 mm) - mounting rail can be cut to fit doors to up to 36" (914.4 mm)
- Dogging: Allen-type key furnished available on non-fire labelled devices
- DELRK (electrified latch retraction kit), DREXKIT (Request to Exit kit) & DLBMKIT (Latch Bolt Monitoring kit) signal switches are available
- Standard finish: US32D
- Other finishes are available upon request



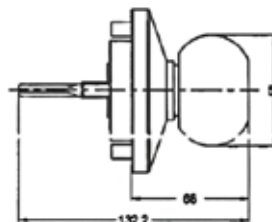
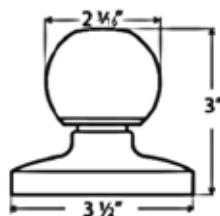
EXTERNAL TRIM ESCUTCHEON TRIM AND PULL DESIGN

- Rigid, non-clutch mechanism.
- Double heavy-duty spring support to prevent sagging and enhance operation.
- Grade 1, thru-bolted design. Easily field reversible.
- Hardened steel heavy-duty tailpiece.
- Electrified escutcheon trim, fail safe or fail secure.
- DT011: Rigid entrance, key locks or unlocks escutcheon trim, operates as classroom function.
- DT011S: Rigid storeroom, key unlocks lever, lever retracts latch bolt, otherwise always locked.
- DT011P: Without cylinder, passage, trim always operable and free.
- DT011D: Dummy escutcheon trim, one sided.
- DPT011P: Pull trim, nighlatch.
- DPT011: Pull trim, pull when dogged.
- Keyway: Standard 6 pins, mortise cylinder. Available 6 or 7 pins SFIC.
- Available with U tube lever handle with mortise cylinder.
- Available with Europrofile cylinder, 5 pins (not with U lever handle).
- Standard finish US26D, optional US32D



EXTERNAL KNOB

- Non-handed.
- Cylindrical body hardened steel heavy-duty tailpiece.
- D3300KC3.5: Rose diameter 3.5", key retracts latchbolt, unlocks lever. Operates as classroom function, ANSI function 08.
- D3300KC3: Rose diameter 3", key retracts latchbolt, unlocks lever. Operates as classroom function, ANSI function 08.
- Keyway: Standard 6 pins
- Standard finish US26D.



ITEM CODE: 1200SVR SERIES



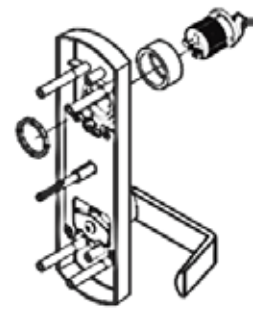
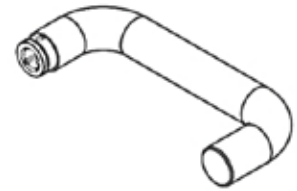
FEATURES:

- Fire exit hardware, Surface Vertical Rod Type.
- UL10C up to 3 hrs. fire labelled installations for all types of 8'x 8' double doors.
- UL file #: GXHX.R25171
- Tested successfully to meet UL10C, UL 305 & ANSI A156.3-2014, Grade 1.
- For use in institutions, schools, universities, commercial buildings where heavy-duty operation is a requirement.
- For doors thickness: 1 3/4" (44.45mm) thickness standard, optional 2 1/4" (57.15mm) thickness. 3 3/4" (95.25mm) minimum stile width required for double door application using standard escutcheon trim or knob. Backset: 2 3/4" (69.85mm)
- Mounting rail assembly: Heavy-duty gauge extruded aluminum body with stainless steel push rail/pad. Optional aluminum mounting rail, sliding shim & end cap in US15 finish at additional cost.
- End cap: Brass, bronze or stainless steel construction.
- Top and bottom chassis: Steel.
- Head cover: Non-ferrous plated material. Cover stock hollow metal doors with type 161 door cut out.
- Furnished with wood and machine screws. Thru bolts are included & standard packaging on fire rated devices.
- Latch bolt & spring: Stainless steel. Spring: Stainless steel.
- Handed, field reversible.
- Touch bar projection: Neutral 3 5/8" (92mm), depressed 2 7/8" (73mm).
- Push pad is available in two lengths: For doors width up to 36" (914.4 mm) - mounting rail can be cut to fit doors up to 30" (762 mm), and for doors width up to 48" (1219.2 mm) - mounting rail can be cut to fit doors to up to 36" (914.4 mm)
- Dogging: Allen-type key furnished available on non-fire labelled devices.
- DELRK (electrified latch retraction kit) & DREXKIT (Request to Exit kit) signal switches are available.
- Standard finish: US32D.
- Other finishes are available upon request.



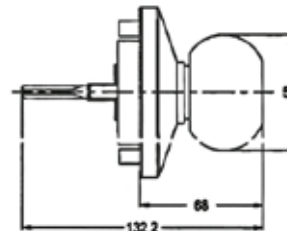
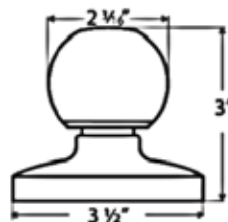
EXTERNAL TRIM ESCUTCHEON TRIM AND PULL DESIGN

- Rigid, non-clutch mechanism.
- Double heavy-duty spring support to prevent sagging and enhance operation.
- Grade 1, thru-bolted design. Easily field reversible.
- Hardened steel heavy-duty tailpiece.
- Electrified escutcheon trim, fail safe or fail secure.
- DT011: Rigid entrance, key locks or unlocks escutcheon trim, operates as classroom function.
- DT011S: Rigid storeroom, key unlocks lever, lever retracts latch bolt, otherwise always locked.
- DT011P: Without cylinder, passage, trim always operable and free.
- DT011D: Dummy escutcheon trim, one sided.
- DPT011P: Pull trim, nighlatch.
- DPT011: Pull trim, pull when dogged.
- Keyway: Standard 6 pins, mortise cylinder. Available 6 or 7 pins SFIC.
- Available with U tube lever handle with mortise cylinder.
- Available with Europrofile cylinder, 5 pins (not with U lever handle).
- Standard finish US26D, optional US32D



EXTERNAL KNOB

- Non-handed.
- Cylindrical body hardened steel heavy-duty tailpiece.
- D3300KC3.5: Rose diameter 3.5", key retracts latchbolt, unlocks lever. Operates as classroom function, ANSI function 08.
- D3300KC3: Rose diameter 3", key retracts latchbolt, unlocks lever. Operates as classroom function, ANSI function 08.
- Keyway: Standard 6 pins
- Standard finish US26D.



ITEM CODE: 1200SVRLBR SERIES



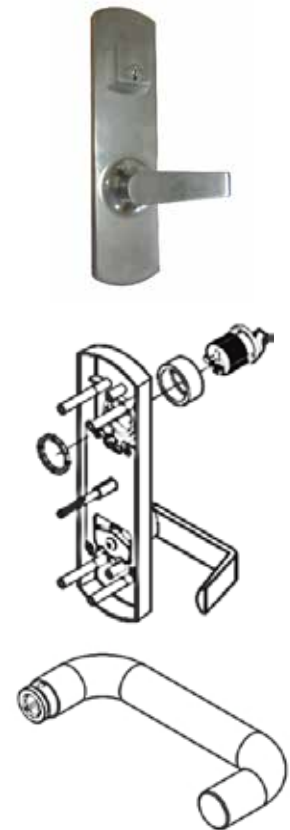
FEATURES:

- Fire exit hardware, Surface Vertical Top Rod Type Less Bottom Rod.
- UL10C up to 3 hrs. fire labelled installations for all types of 8'x 8' double doors.
- UL file #: GXHX.R25171
- Tested successfully to meet UL10C, UL 305 & ANSI A156.3-2014, Grade 1.
- For use in institutions, schools, universities, commercial buildings where heavy-duty operation is a requirement.
- For doors thickness: 1 3/4" (44.45mm) thickness standard, optional 2 1/4" (57.15mm) thickness. 3 3/4" (95.25mm) minimum stile width required for double door application using standard escutcheon trim or knob. Backset: 2 3/4" (69.85mm)
- Mounting rail assembly: Heavy-duty gauge extruded aluminum body with stainless steel push rail/pad. Optional aluminum mounting rail, sliding shim & end cap in US15 finish at additional cost.
- End cap: Brass, bronze or stainless steel construction.
- Top chassis: Steel.
- Auxiliary latch bolt DAUXFL inside the packaging.
- Head cover: Non-ferrous plated material. Cover stock hollow metal doors with type 161 door cut out.
- Furnished with wood and machine screws. Thru bolts are included & standard packaging on fire rated devices.
- Handed, field reversible.
- Touch bar projection: Neutral 3 5/8" (92mm), depressed 2 7/8" (73mm).
- Push pad is available in two lengths: For doors width up to 36" (914.4 mm) - mounting rail can be cut to fit doors up to 30" (762 mm), and for doors width up to 48" (1219.2 mm) - mounting rail can be cut to fit doors to up to 36" (914.4 mm)
- Dogging: Allen-type key furnished available on non-fire labelled devices.
- DELRK (electrified latch retraction kit) & DREXKIT (Request to Exit kit) signal switches are available
- Standard finish: US32D.
- Other finishes are available upon request.



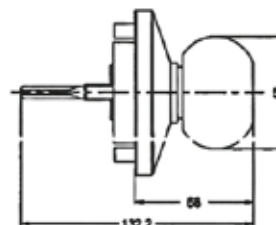
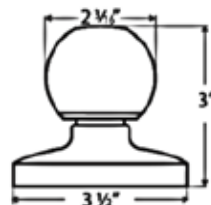
EXTERNAL TRIM ESCUTCHEON TRIM AND PULL DESIGN

- Rigid, non-clutch mechanism.
- Double heavy-duty spring support to prevent sagging and enhance operation.
- Grade 1, thru-bolted design. Easily field reversible.
- Hardened steel heavy-duty tailpiece.
- Electrified escutcheon trim, fail safe or fail secure.
- DT011: Rigid entrance, key locks or unlocks escutcheon trim, operates as classroom function.
- DT011S: Rigid storeroom, key unlocks lever, lever retracts latch bolt, otherwise always locked.
- DT011P: Without cylinder, passage, trim always operable and free.
- DT011D: Dummy escutcheon trim, one sided.
- DPT011P: Pull trim, nighlatch.
- DPT011: Pull trim, pull when dogged.
- Keyway: Standard 6 pins, mortise cylinder. Available 6 or 7 pins SFIC.
- Available with U tube lever handle with mortise cylinder.
- Available with Europrofile cylinder, 5 pins (not with U lever handle).
- Standard finish US26D, optional US32D



EXTERNAL KNOB

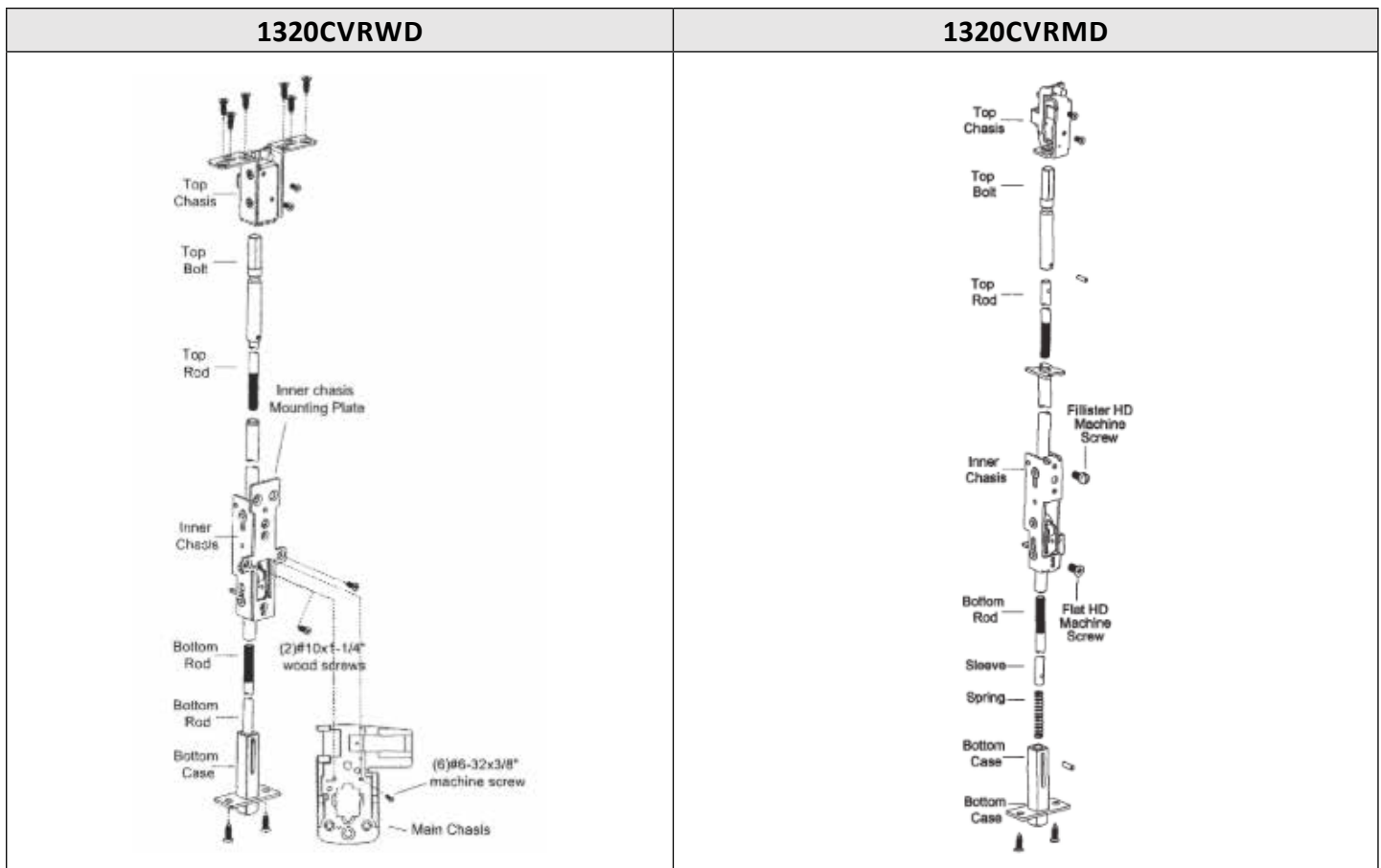
- Non-handed.
- Cylindrical body hardened steel heavy-duty tailpiece.
- D3300KC3.5: Rose diameter 3.5", key retracts latchbolt, unlocks lever. Operates as classroom function, ANSI function 08.
- D3300KC3: Rose diameter 3", key retracts latchbolt, unlocks lever. Operates as classroom function, ANSI function 08.
- Keyway: Standard 6 pins
- Standard finish US26D.



ITEM CODE: 1320CVRMD & 1320CVRWD SERIES

FEATURES:

- Fire exit hardware, Concealed Vertical Rod Type for metal doors and wood doors.
- Optional: Less bottom rod. No bottom strike, free access for wheel chair, stretchers and carts, which eliminate tripping potential & disfiguration of floors due to dragging of bottom bolt.
- UL file #: GXHX.R25171
- UL10C up to 3 hrs. fire labelled installations for all types of 8' x 8' double doors.
- Tested successfully to meet UL10C, UL 305 & ANSI A156.3-2014, Grade 1.
- For use in institutions, schools, universities, commercial buildings where heavy-duty operation is a requirement.



- For metal doors thickness: 1 3/4" (44.45mm) thickness standard. 4 1/2" (114mm) minimum stile width required for double door application using standard escutcheon trim. Backset: 2 3/4" (69.85mm)
- Mounting rail assembly: Heavy-duty gauge extruded aluminum body with stainless steel push rail/pad. Optional aluminum mounting rail, sliding shim & end cap in US15 finish at additional cost.
- End cap: Brass, bronze or stainless steel construction.
- Top and bottom bolts: Stainless steel. Top and Bottom bolt travel 7/16" (11 mm). Projection adjustable up to 1" (25mm).
- Head cover: Non-ferrous plated material. Cover stock hollow metal doors with type 161 door cut out.
- Furnished with wood and machine screws. Thru bolts are included & standard packaging on fire rated devices.
- Latch bolt & spring: Stainless steel. Spring: Stainless steel.
- Handed, field reversible.
- Auxiliary latch bolt DAUXFL inside the packaging (for LBR version).
- Touch bar projection: Neutral 3 5/8" (92mm), depressed 2 7/8" (73mm).
- Push pad is available in two lengths: For doors width up to 36" (914.4 mm) - mounting rail can be cut to fit doors up to 30" (762 mm), and for doors width up to 48" (1219.2 mm) - mounting rail can be cut to fit doors to up to 36" (914.4 mm).
- Dogging: Allen-type key furnished available on non-fire labelled devices.
- DELRK (electrified latch retraction kit) & DREXKIT (Request to Exit kit) signal switches are available
- Standard finish: US32D.
- Other finishes are available upon request.

EXTERNAL ESCUTCHEON TRIM

- Freewheeling, clutch mechanism.
- Grade 1, thru-bolted design. Easily field reversible.
- Hardened steel heavy-duty tailpiece.
- DT012: Rigid entrance, key locks or unlocks escutcheon trim, operates as classroom function.
- DT012S: Rigid storeroom, key unlocks lever, lever retracts latch bolt, otherwise always locked.
- DT012P: Without cylinder, passage, trim always operable and free.
- DT012D: Dummy escutcheon trim, one sided.
- Keyway: Standard 6 pins, mortise cylinder. Available 6 or 7 pins SFIC.
- Standard finish US26D



ITEM CODE: 1110MLT SERIES



FEATURES:

- Fire exit hardware, mortise lock Type.
- Application: for wood/metal doors 1 3/4' (44.5mm) thickness, 4 1/2' (114mm), minimum stile width required for double door application using standard escutcheon trim. Mortise backset: 2 3/4' (70mm).
- UL file #: GXHX.R25171
- UL10C up to 3 hrs. fire labelled installations for all types of 4'x 8' single doors and 8'x 8' double doors.
- Tested successfully to meet UL10C, UL 305 & ANSI A156.3-2014, Grade 2.
- For use in institutions, schools, universities, commercial buildings where heavy-duty operation is a requirement.



- Mounting rail assembly: Heavy-duty gauge extruded aluminum body with stainless steel push rail/pad. Optional aluminum mounting rail, sliding shim & end cap in US15 finish at additional cost.
- End cap: Brass, bronze or stainless steel construction.
- Head cover: Non-ferrous plated material. Cover stock hollow metal doors with type 161 door cut out.
- Furnished with wood and machine screws. Thru bolts are included & standard packaging on fire rated devices.
- Fire exit hardware: Handed, non-field reversible. Mortise lock: field reversible.
- Strike: Standard ANSI strike.
- Touch bar projection: Neutral 3 5/8' (92mm), depressed 2 7/8' (73mm).
- Push pad is available in two lengths: For doors width up to 36' (914.4 mm) - mounting rail can be cut to fit doors up to 30' (762 mm), and for doors width up to 48' (1219.2 mm) - mounting rail can be cut to fit doors to up to 36' (914.4 mm).
- Cylinder dogging: Available for non-fire labelled devices.
- DELRK (electrified latch retraction kit) & DREXKIT (Request to Exit kit) signal switches are available
- Standard finish: US32D.
- Other finishes are available upon request.

EXTERNAL ESCUTCHEON TRIM

- Door thickness 1 3/4' (44 mm)
- Trim non-handed
- DT013: Rigid entrance, key locks or unlocks escutcheon trim, operates as classroom function.
- DT013S: Rigid storeroom, key retracts latchbolt, otherwise always locked.
- DT013P: Without cylinder, passage, trim always operable and free.
- DT013D: Dummy escutcheon trim, one sided.
- Keyway: Standard 6 pins, mortise cylinder. Available 6 or 7 pins SFIC.
- Standard finish US26D

