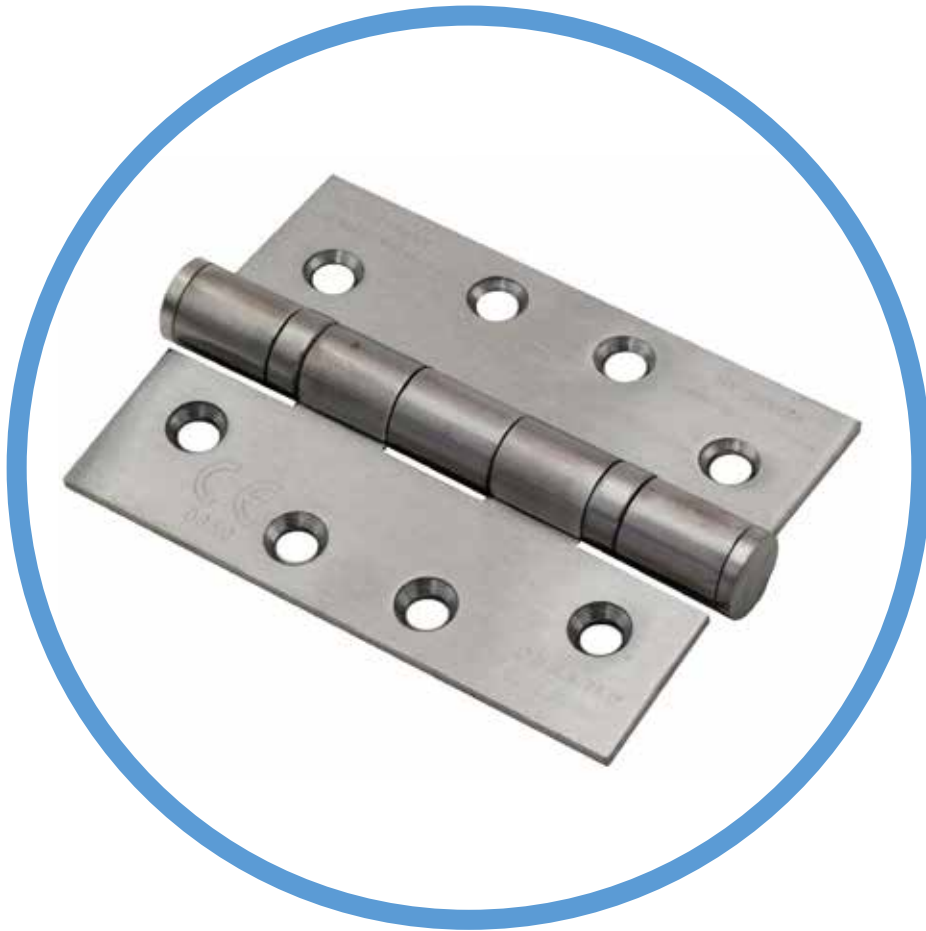


***CE/EN ARCHITECTURAL  
IRONMONGERY***

---



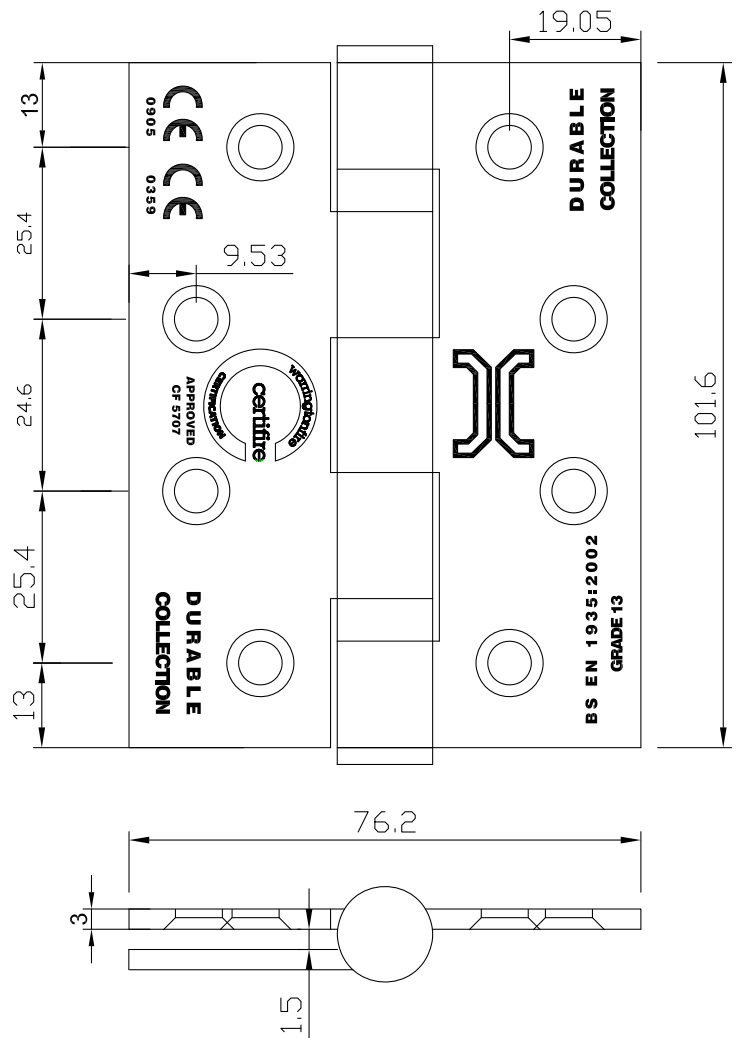
**BUTT HINGES**

**ITEM CODE: HG433SSXXX**  
**SEVERE DUTY STAINLESS STEEL 2 BALL BEARING**  
**BUTT HINGES**



**FEATURES:**

- Area of application: For wooden or metal doors  
 Material: stainless steel EN 1.4301 (type SUS304), optional EN 1.4371 (type SUS201) or stainless steel EN 1.4401 (type SUS316)
- Clear/free gap: 1.5 mm
- Maximum adjusted door weight: 120 kgs
- Square corners, optional radius R10.
- Supplied with:
  - o For steel doors, 1 pair of hinge, 16 pcs flat head and countersunk steel screws (M6x12)
  - o For wood doors, 1 pair of hinge, 16 pcs flat head and countersunk wood screws (#10x31.75mm)
- Tested and certified to BS EN 1634-1: 2014 and BS EN 1935:2002/AC:2003
- CE marked, 0905-CPR-000526-01 & 0359-CPR-000575
- CERTIFIRE, Assessment report CF5707
- DoP (Declaration of Performance) available on website or on request
- Standard finish: satin stainless steel (SSS)
- Other finishes are available: Polished stainless steel (PSS), polished brass (PB), antique brass (AB), antique copper (AC) and physical vapour deposition (PVD) finishes
- Optional: Intumescent fire protection kit for wood doors
- Hinge classification: 4-7-6-1-1-4-0-13

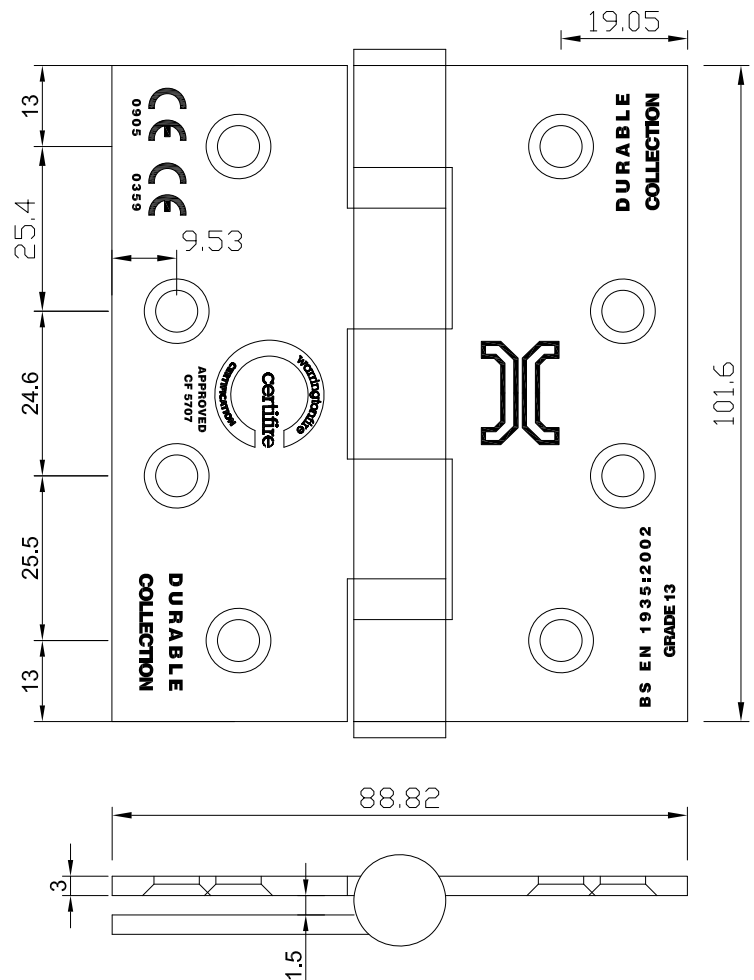


**ITEM CODE: HG43.53SSXXX**  
**SEVERE DUTY STAINLESS STEEL 2 BALL BEARING BUTT HINGES**



**FEATURES:**

- Area of application: For wooden or metal doors
- Material: stainless steel EN 1.4301 (type SUS304), optional EN 1.4371 (type SUS201) or stainless steel EN 1.4401 (type SUS316)
- Clear/free gap: 1.5 mm
- Maximum adjusted door weight: 120 kgs
- Square corners, optional radius R10
- Supplied with:
  - o For steel doors, 1 pair of hinge, 16 pcs flat head and countersunk steel screws (M6x12)
  - o For wood doors, 1 pair of hinge, 16 pcs flat head and countersunk wood screws (#10x31.75mm)
- Tested and certified to BS EN 1634-1: 2014 and BS EN 1935:2002/AC:2003
- CE marked, 0905-CPR-000526-01 & 0359-CPR-000575
- CERTIFIRE, Assessment report CF5707
- DoP (Declaration of Performance) available on website or on request
- Standard finish: satin stainless steel (SSS)
- Other finishes are available: Polished stainless steel (PSS), polished brass (PB), antique brass (AB), antique copper (AC) and physical vapour deposition (PVD) finishes
- Optional: Intumescent fire protection kit for wood doors
- Hinge classification: 4-7-6-1-1-4-0-13

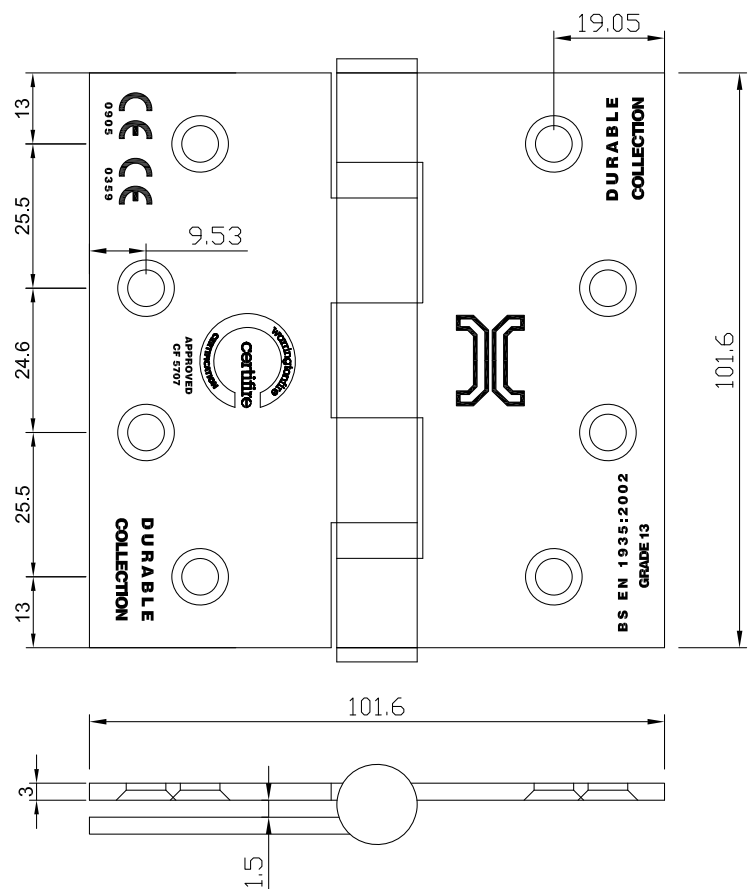


**ITEM CODE: HG443SSXXX**  
**SEVERE DUTY STAINLESS STEEL 2 BALL BEARING BUTT HINGES**



**FEATURES:**

- Area of application: For wooden or metal doors
- Material: stainless steel EN 1.4301 (type SUS304), optional EN 1.4371 (type SUS201) or stainless steel EN 1.4401 (type SUS316)
- Clear/free gap: 1.5 mm
- Maximum adjusted door weight: 120 kgs
- Square corners, optional radius R10.
- Supplied with:
  - o For steel doors, 1 pair of hinge, 16 pcs flat head and countersunk steel screws (M6x12)
  - o For wood doors, 1 pair of hinge, 16 pcs flat head and countersunk wood screws (#10x31.75mm)
- Tested and certified to BS EN 1634-1: 2014 and BS EN 1935:2002/AC:2003
- CE marked, 0905-CPR-000526-01 & 0359-CPR-000575
- CERTIFIRE, Assessment report CF5707
- DoP (Declaration of Performance) available on website or on request
- Standard finish: satin stainless steel (SSS)
- Other finishes are available: Polished stainless steel (PSS), polished brass (PB), antique brass (AB), antique copper (AC) and physical vapour deposition (PVD) finishes.
- Optional: Intumescent fire protection kit for wood doors.
- Hinge classification: 4-7-6-1-1-4-0-13

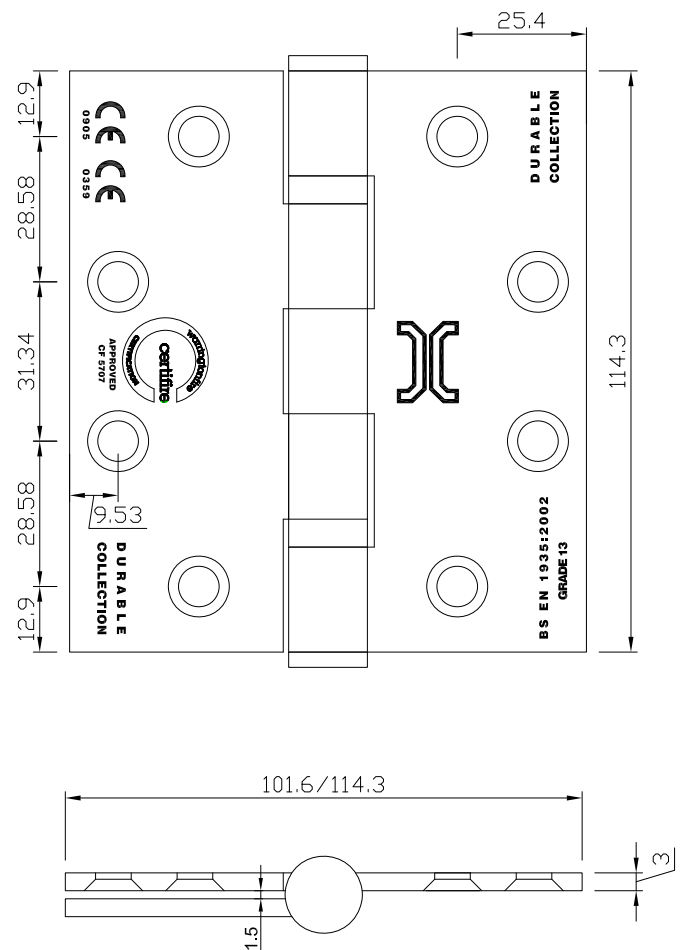


**ITEM CODE: HG4.543SSXXX & HG4.54.53SSXXX**  
**SEVERE DUTY STAINLESS STEEL 2 BALL BEARING BUTT HINGES**



**FEATURES:**

- Area of application: For wooden or metal doors
- Material: stainless steel EN 1.4301 (type SUS304), optional EN 1.4371 (type SUS201) or stainless steel EN 1.4401 (type SUS316)
- Clear/free gap: 1.5 mm
- Maximum adjusted door weight: 120 kgs
- Square corners, optional radius R10.
- Supplied with:
  - o For steel doors, 1 pair of hinge, 16 pcs flat head and countersunk steel screws (M6x12)
  - o For wood doors, 1 pair of hinge, 16 pcs flat head and countersunk wood screws (#10x31.75mm)
- Tested and certified to BS EN 1634-1: 2014 and BS EN 1935:2002/AC:2003
- CE marked, 0905-CPR-000526-01 & 0359-CPR-000575
- CERTIFIRE, Assessment report CF5707
- DoP (Declaration of Performance) available on website or on request
- Standard finish: satin stainless steel (SSS)
- Other finishes are available: Polished stainless steel (PSS), polished brass (PB), antique brass (AB), antique copper (AC) and physical vapour deposition (PVD) finishes
- Optional: Intumescent fire protection kit for wood doors
- Hinge classification: 4-7-6-1-1-4-0-13

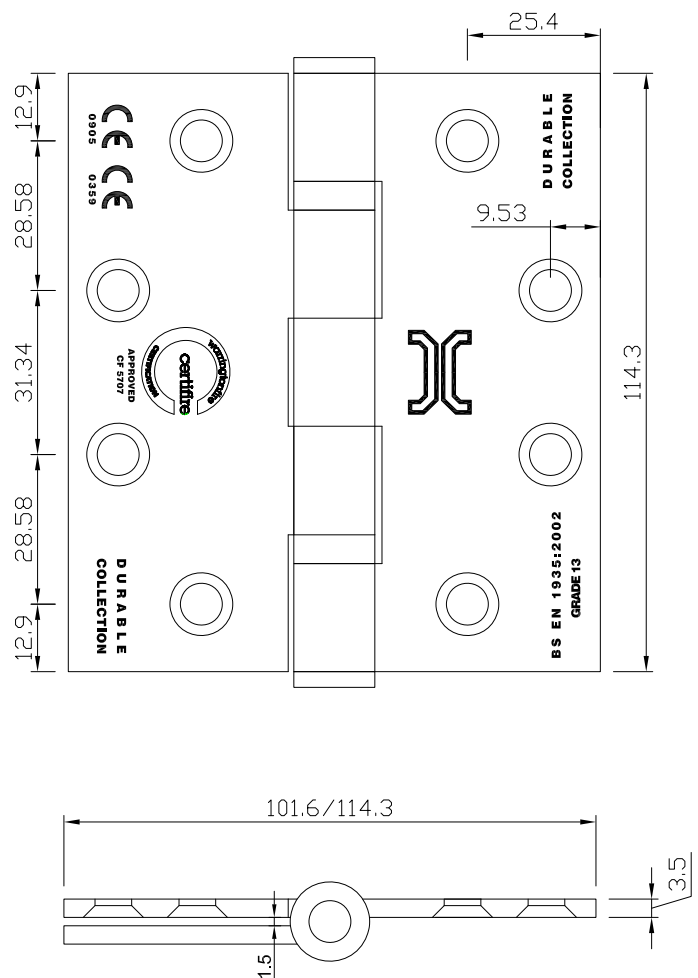


**ITEM CODE: HG4.543.5SSXXX, HG4.54.53.5SSXXX**  
**SEVERE DUTY STAINLESS STEEL 2 BALL BEARING BUTT HINGES**



## FEATURES:

- Area of application: For wooden or metal doors
- Material: Stainless steel EN 1.4301 (type SUS304), optional EN 1.4372 (type SUS201) or EN 1.4401 (type SUS316)
- Clear/free gap: 1.5 mm
- Maximum adjusted door weight: 120 kgs
- Square corners, optional radius R10.
- Supplied with:
  - o For steel doors, 1 pair of hinge, 16 pcs flat head and countersunk steel screws (M6x12)
  - o For wood doors, 1 pair of hinge, 16 pcs flat head and countersunk wood screws (#10x31.75mm)
- CE marked, 0905-CPR-000526-01 & 0359-CPR-000575
- CERTIFIRE, Assessment report CF5707
- DoP (Declaration of Performance) available on website or on request
- Standard finish: satin stainless steel (SSS)
- Other finishes are available: Polished stainless steel (PSS), polished brass (PB), antique brass (AB), antique copper (AC) and physical vapour deposition (PVD) finishes
- Tested and certified to BS EN 1634-1: 2014 and BS EN 1935:2002/AC:2003
- Optional: Intumescent fire protection kit for wood doors
- Hinge classification: 4-7-6-1-1-4-0-13

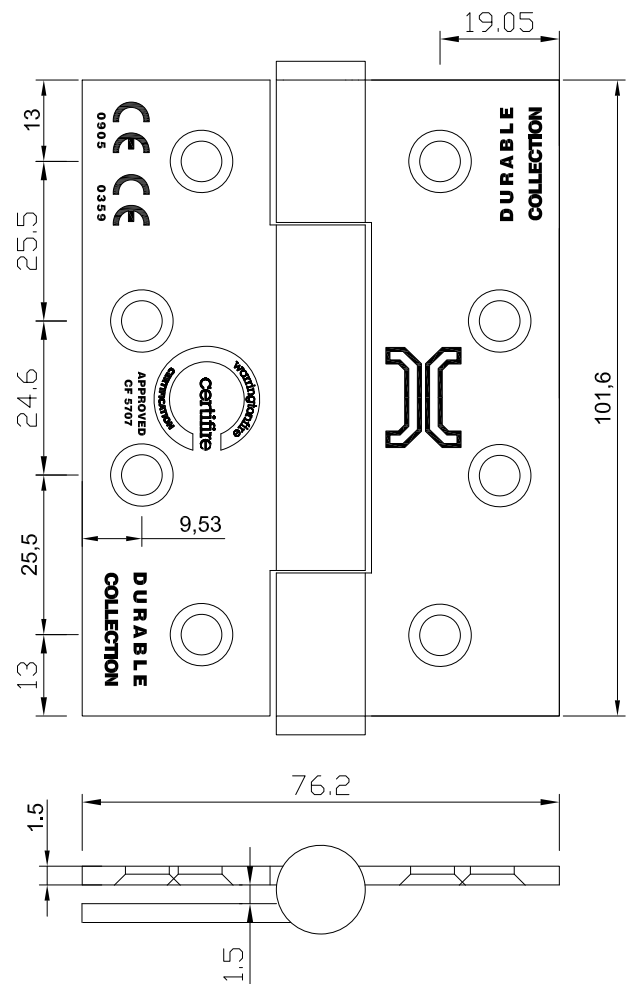


**ITEM CODE: HG433SSXXCB**  
**SEVERE DUTY STAINLESS STEEL CONCEALED BALL BEARING  
 BUTT HINGES**



**FEATURES:**

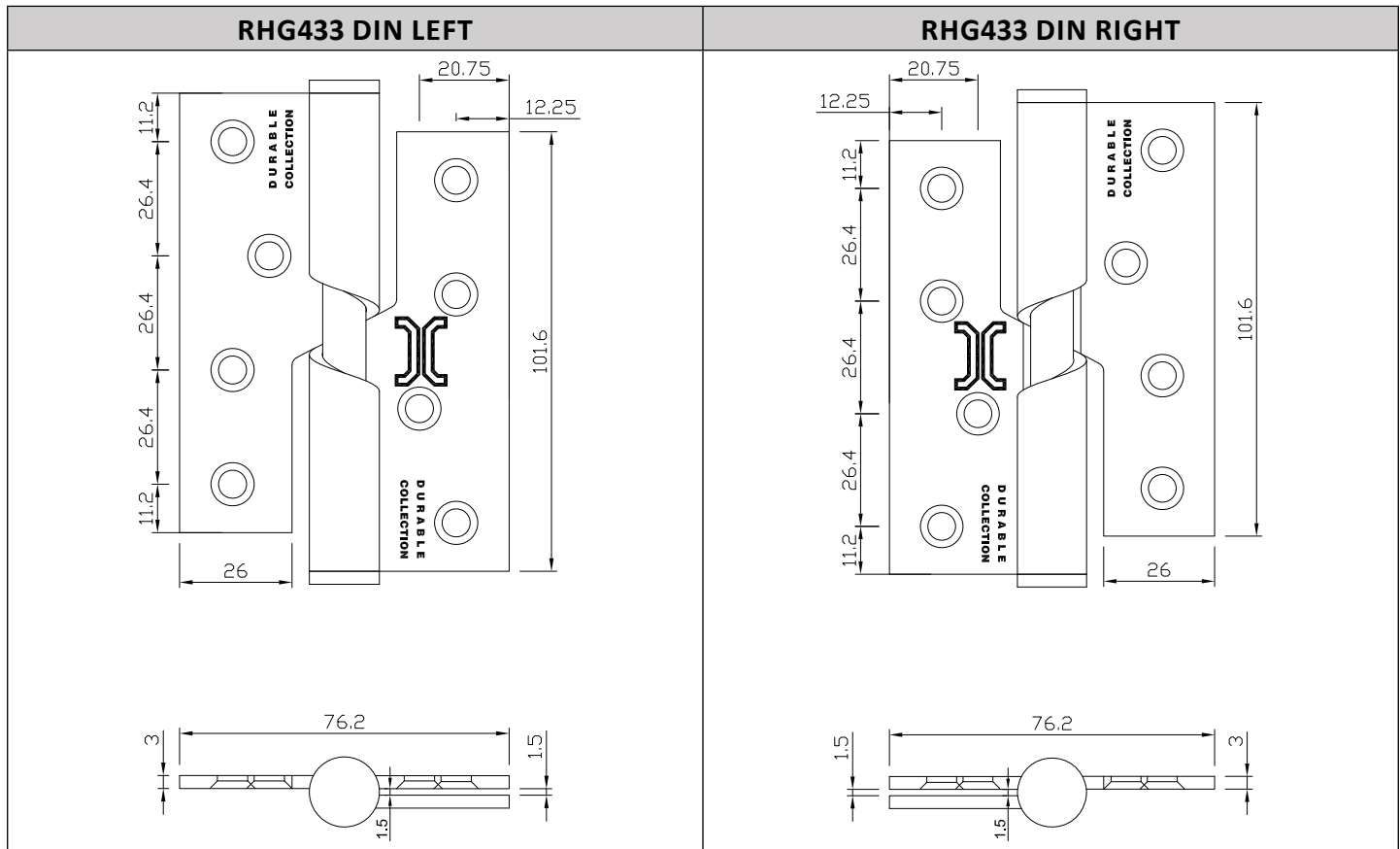
- Area of application: For wooden and steel doors
- Material: stainless steel EN 1.4301 (type SUS304), optional EN 1.4372 (type SUS201) or EN 1.4401 (type SUS316)
- Clear/free gap: 1.5 mm
- Maximum adjusted door weight: 120 kgs
- Square corners, optional radius R10.
- Maintenance free.
- Supplied with:
  - o For steel doors, 1 pair of hinge, 16 pcs flat head and countersunk steel screws (M6x12)
  - o For wood doors, 1 pair of hinge, 16 pcs flat head and countersunk wood screws (#10x31.75mm)
- Tested and certified to BS EN 1634-1: 2014 and BS EN 1935:2002/AC:2003
- CERTIFIRE, Assessment report CF5707
- Standard finish: satin stainless steel (SSS)
- Other finishes are available: Polished stainless steel (PSS), polished brass (PB), antique brass (AB), antique copper (AC) and physical vapour deposition (PVD) finishes
- Optional: Intumescent fire protection kit for wood doors
- Hinge classification: 4-7-6-1-1-4-0-13



## ITEM CODE: RHG433 SERIES RISING BUTT HINGES

### FEATURES:

- Area of application: For wooden or metal doors.
- Material: stainless steel EN 1.4301 (type SUS304). Optional stainless steel EN 1.4401 (type SUS316).
- Clear/free gap: 1.5 mm.
- Maximum adjusted door weight: 50 kgs.
- Square corners, two versions: DIN Left or DIN Right
- Hinges cause the doors to shut.
- Special door head/frame may be required to allow the leaf to rise.
- To ensure correct working, 2 rising hinges must be fitted with screws supplied.
- Supplied with: 1 pair of rising hinge, 16 pcs of flat head and countersunk wood screws (#10x31.75mm).
- Standard finish: satin stainless steel (SSS).
- Other finishes are available upon request: Polished stainless steel (PSS), polished brass (PB), antique brass (AB), antique copper (AC) and physical vapour deposition (PVD) finishes.





**ITEM CODE: HG433SSXXXS**  
**SECURITY SEVERE DUTY STAINLESS STEEL 2 BALL**  
**BEARING BUTT HINGES**



**FEATURES:**

- Area of application: For wooden or metal doors
- Material: stainless steel EN 1.4301 (type SUS304), optional EN 1.4371 (type SUS201) or stainless steel EN 1.4401 (type SUS316)
- Clear/free gap: 1.5 mm
- Maximum adjusted door weight: 120 kgs
- Square corners, optional radius R10.
- Tested and certified to BS EN 1634-1: 2014 and BS EN 1935:2002/AC:2003
- CE marked, 0905-CPR-000526-01 & 0359-CPR-000575
- CERTIFIRE, Assessment report CF5707
- DoP (Declaration of Performance) available on website or on request
- Supplied with:
  - o For steel doors, 1 pair of hinge, 16 pcs flat head and countersunk steel screws (M6x12)
  - o For wood doors, 1 pair of hinge, 16 pcs flat head and countersunk wood screws (#10x31.75mm)
- Tested and certified to BS EN 1634-1: 2014 and BS EN 1935:2002/AC:2003
- Standard finish: satin stainless steel (SSS).
- Other finishes are available upon request.
- Optional: Intumescent fire protection kit for wood doors
- Hinge classification: 4-7-6-1-1-4-0-13

