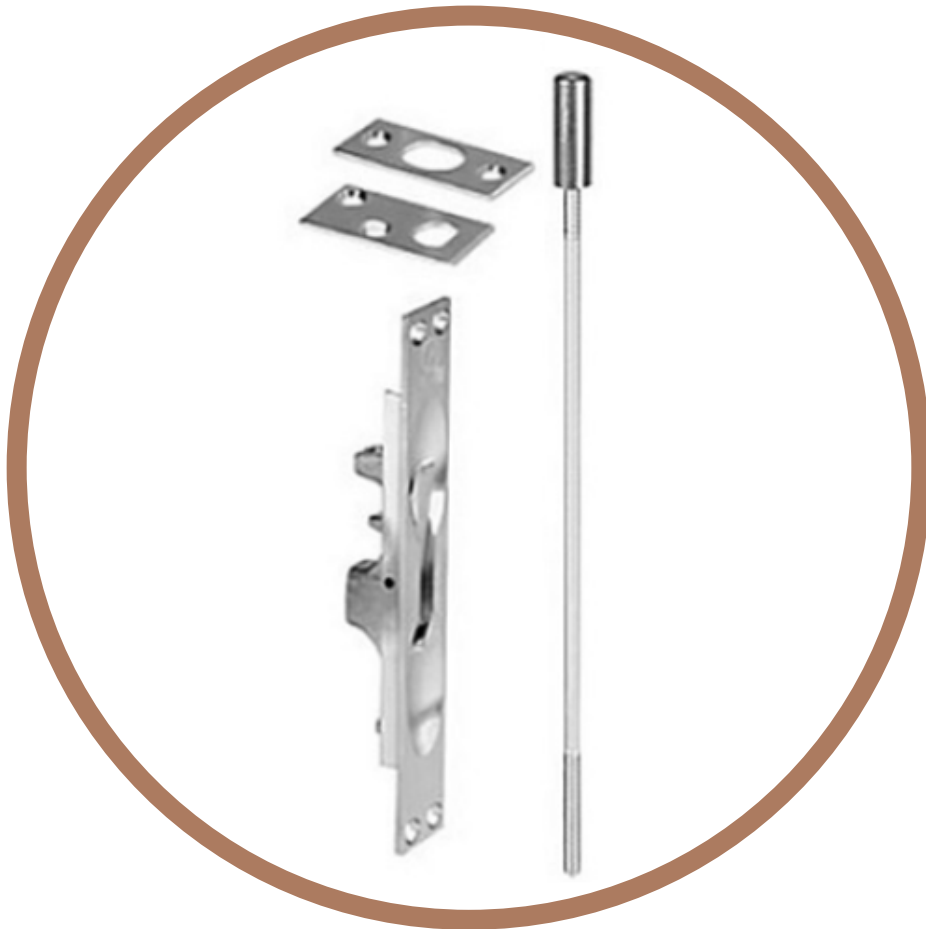


***ANSI/UL ARCHITECTURAL
HARDWARE***

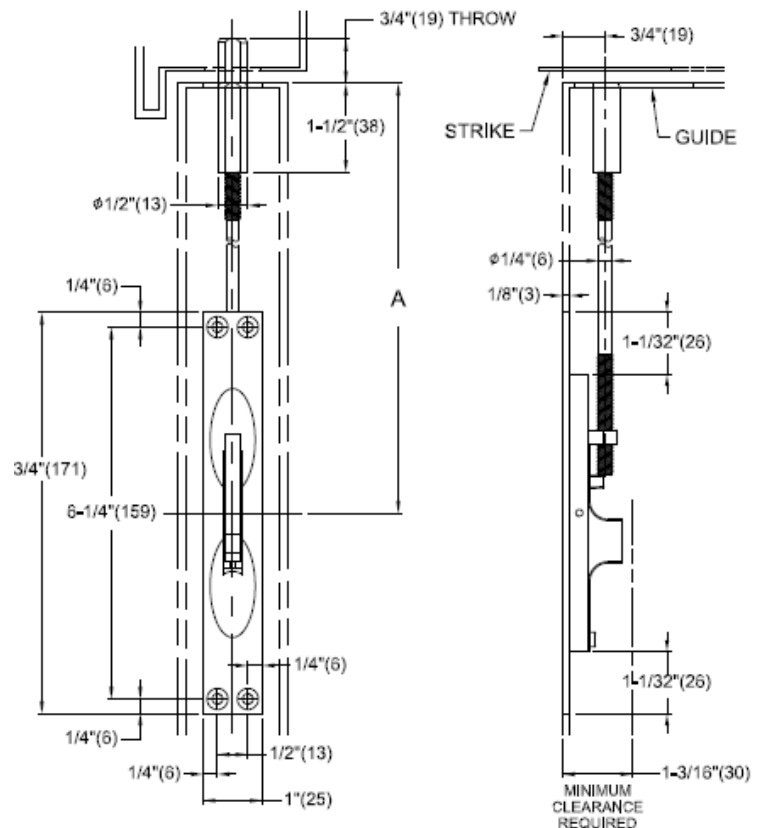


MANUAL FLUSH BOLT

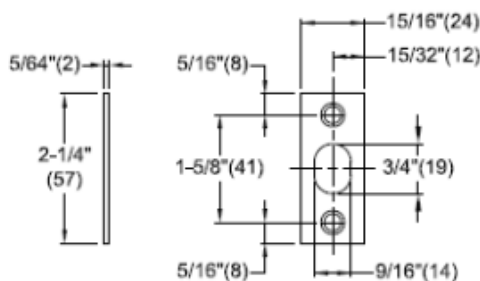
ITEM CODE: DURABLE FB-105M
LEVER ACTION MANUAL FLUSH BOLT



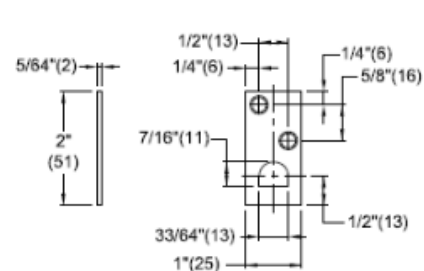
- Area of application: hollow-metal, metal-clad, steel-covered composite and flush type sheet-metal doors.
- Non-Handed
- Faceplate: 25 mm x 171 mm, bolt throw: 19 mm, bolt backset: 19 mm.
- Guide plate: 25 mm x 51 mm x 2 mm.
- Mortise strike: 24 mm x 57 mm x 2 mm.
- Standard rod length (A): 305 mm.
- Optional rod length (A): 152 mm, 229 mm, 457 mm, 610 mm, 782 mm, 914 mm, 1219 mm.
- UL listed and examined to UL 10C. UL file number: GXSR.R38622
- Tested successfully to EN 1634-1.
- Suitable for fire rated up to and including 3 hours.
- Vertical top and bottom bolts adjustment.
- Each supplied with 4 pcs Combo screws for face plate (#8x32), 4 pcs Combo screws for strike and guide (#8x32).
- Dust proof socket to be ordered separately.
- Door clearance must be at least ¼ inch
- Standard finish: US26D (Satin chromium plated). Other finishes are available upon request.



STRIKE



GUIDE



**ITEM CODE: FB-105M
MANUALLY OPERATED LEVER EXTENSION FLUSH BOLT**

- Area of application: metal doors.
- Non-Handed
- Faceplate: 6-3/4" (171 mm) x 1" (25.4 mm).
- Length of bolt rod: 10-1/4" (260 mm) with a 5/8" (16 mm) throw.
- Bolt diameter: 1/2" (12.7 mm)
- Optional rod length is available.
- Forged brass body, Aluminum faceplate.
- Conform to fit preparation for steel frames and doors (1-3/4" thickness) ANSI/ BHMA A156.115.4
- UL listed and examined to UL 10C. UL file number: GXSR.R38622
- Suitable for fire rated up to and including 3 hours.
- Supplied with fixing screws.
- Dust proof socket to be ordered separately.
- Standard finish: US26D (Satin chromium plated)
- Other finishes are available upon request.



ITEM CODE: FB-105W
MANUALLY OPERATED LEVER FLUSH BOLT



- Area of application: Wood doors.
- Non-Handed
- Faceplate: 6-3/4" (171 mm) x 1" (25.4 mm).
- Bolt rod throw: 7/8" (22.22 mm).
- Bolt diameter: 1/2" (12.7 mm).
- Bolt backcheck: 3/4" (19.05 mm).
- UL listed and examined to UL 10C. UL file number: GXSR.R38622
- Suitable for fire rated up to and including 1.5 hours.
- Supplied with fixing screws.
- Dust proof socket to be ordered separately.
- Standard finish: US26D (Satin chromium plated).
- Other finishes are available upon request.

