

ANSI/UL ARCHITECTURAL HARDWARE



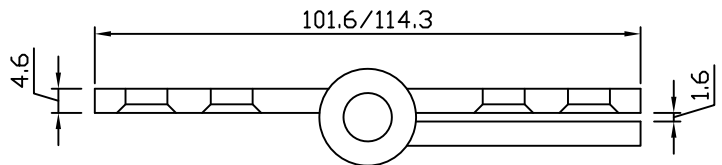
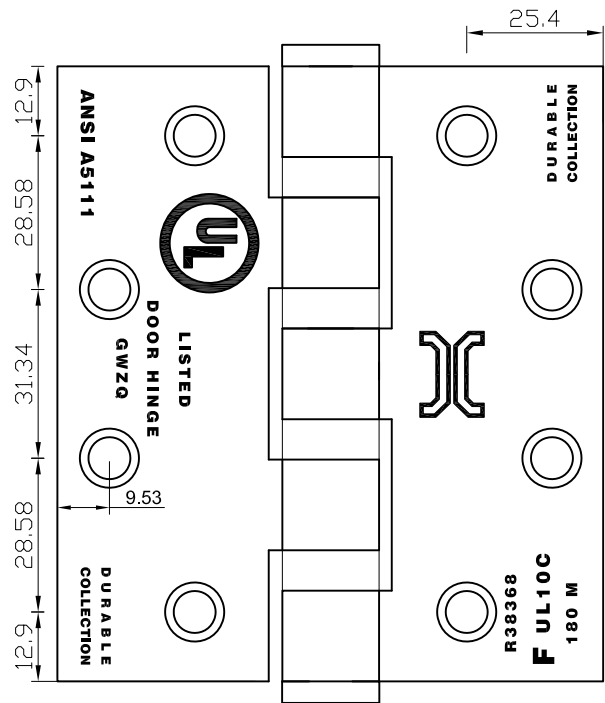
HINGES

ITEM CODE: BB4.54.54.6, BB4.544.6, BB4.54.54.6NRP
& BB4.544.6NRP
STAINLESS STEEL FULL MORTISE 4 BALL BEARING
HINGES TYPE



FEATURES:

- Area of application: Wooden or metal doors.
- Base material: Stainless steel EN 1.4301 (type 304), optional stainless steel EN 1.4401 (type SUS316).
- UL listed and examined to UL10C. UL unique file #: GWZQ.R38368, suitable for fire rated up to and including 3 hours.
- Template hinge dimensions, screw holes location and tolerance in accordance with ANSI standard A156.7.
- Hinge meets the requirement of NFPA80-2013.
- Certified to ANSI/BHMA standard A156.1-2016 – (ANSI A5111), grade 1 (2,500,000 cycles).
- Nondetachable ball bearing and non-rising pin (hole in bottom tip for easy removal).
- Square corners. Optional round corners (radius 6.4 mm or 16 mm).
- Clear/free gap: 1.6 mm.
- Optional: fixed pin, non-removable pin (NRP) or with security pin.
- Supplied with:
 - For steel doors: 1 pair of hinge & 16 pcs flat head & countersunk machine screws (12-24 x 1/2").
 - For wood doors: 1 pair of hinge & 16 pcs flat head and countersunk wood screws (#12 x 1 1/4").
- Standard finish: satin stainless steel (BHMA finish code # 630).
- Other finishes are available upon request

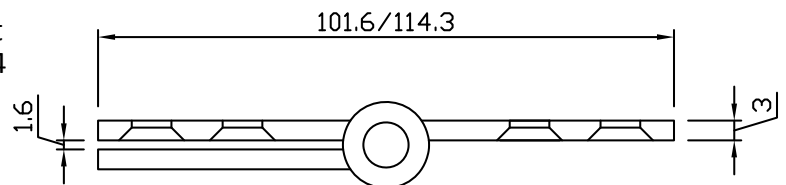
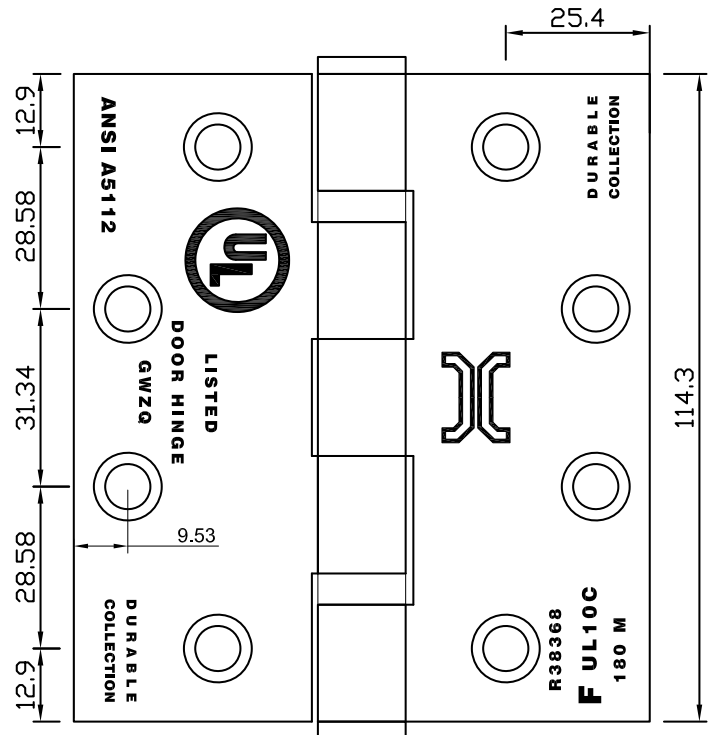


**ITEM CODE: BB4.54.53 & BB4.543
STAINLESS STEEL FULL MORTISE 2 BALL BEARING
HINGES TYPE**



FEATURES:

- Area of application: Wooden or metal doors.
- Base material: Stainless steel EN 1.4301 (type 304), optional stainless steel EN 1.4401 (type SUS316).
- UL listed and examined to UL10C. UL unique file #: GWZQ.R38368, suitable for fire rated up to and including 3 hours.
- Template hinge dimensions, screw holes location and tolerance in accordance with ANSI standard A156.7.
- Hinge meets the requirement of NFPA80-2013.
- Certified to ANSI/BHMA standard A156.1-2016 – (ANSI A5112), grade 1 (2,500,000 cycles).
- Square corners. Optional round corners (radius 6.4 mm or 16 mm).
- Clear/free gap: 1.6 mm.
- Standard: non-rising pin (hole in bottom tip for easy removal).
- Optional: fixed pin, non-removable pin (NRP) or with security pin.
- Supplied with:
 - For steel doors: 1 pair of hinge & 16 pcs flat head & countersunk machine screws (12-24 x ½").
 - For wood doors: 1 pair of hinge & 16 pcs flat head and countersunk wood screws (#12 x 1 ¼").
- Standard finish: satin stainless steel (BHMA finish code # 630).
- Other finishes are available upon request

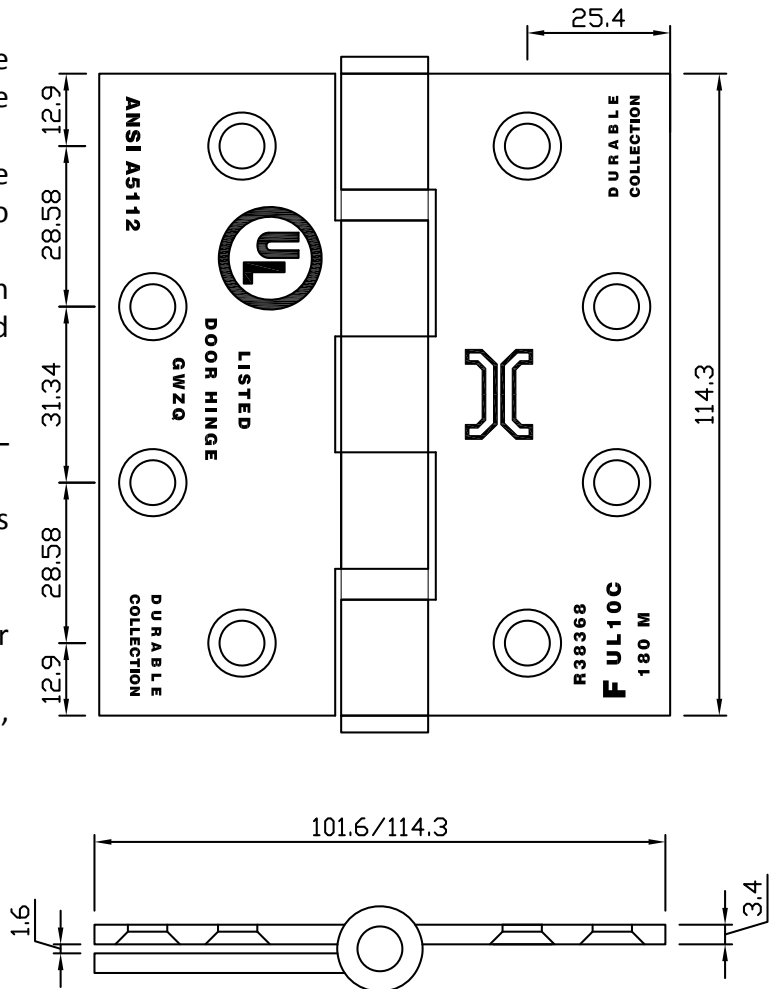


**ITEM CODE: BB4.54.53.5, BB4.543.5, BB4.54.53.5NRP
& BB4.543.5NRP
STAINLESS STEEL FULL MORTISE 2 BALL BEARING
HINGES TYPE**



FEATURES:

- Area of application: Wooden or metal doors.
- Base material: Stainless steel EN 1.4301 (type 304), optional stainless steel EN 1.4401 (type SUS316).
- UL listed and examined to UL10C. UL unique file #: GWZQ.R38368, suitable for fire rated up to and including 3 hours.
- Template hinge dimensions, screw holes location and tolerance in accordance with ANSI standard A156.7.
- Hinge meets the requirement of NFPA80-2013.
- Certified to ANSI/BHMA standard A156.1-2016 – (ANSI A5112), grade 1 (2,500,000 cycles).
- Square corners. Optional round corners (radius 6.4 mm or 16 mm).
- Clear/free gap: 1.6 mm.
- Standard: non-rising pin (hole in bottom tip for easy removal).
- Optional: Nondetachable ball bearing fixed pin, non-removable pin (NRP) or with security pin.
- Supplied with:
 - For steel doors: 1 pair of hinge & 16 pcs flat head & countersunk machine screws (12-24 x ½").
 - For wood doors: 1 pair of hinge & 16 pcs flat head and countersunk wood screws (#12 x 1 ¼").
- Standard finish: satin stainless steel (BHMA finish code # 630).
- Other finishes are available upon request.

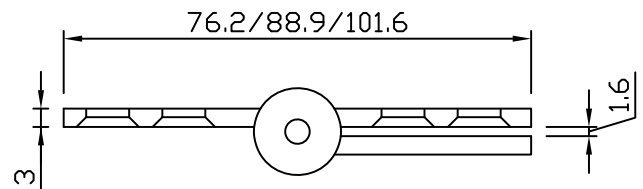
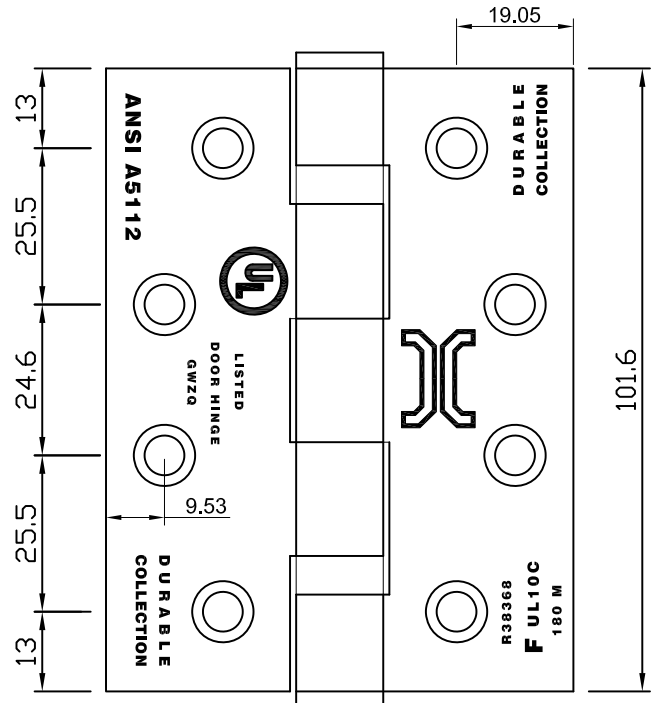


**ITEM CODE: BB433, BB43.53 & BB443
STAINLESS STEEL FULL MORTISE 2 BALL BEARING
HINGES TYPE**



FEATURES:

- Area of application: Wooden or metal doors.
- Base material: Stainless steel EN 1.4301 (type 304), optional stainless steel EN 1.4401 (type SUS316).
- UL listed and examined to UL10C. UL unique file #: GWZQ.R38368, suitable for fire rated up to and including 3 hours.
- Template hinge dimensions, screw hole location and tolerance in accordance with ANSI standard A156.7.
- Hinge meets the requirement of NFPA80-2013.
- Certified to ANSI/BHMA standard A156.1-2016 – (ANSI A5112), grade 1 (2,500,000 cycles).
- Square corners. Optional round corners (radius 6.4 mm or 16 mm).
- Clear/free gap: 1.6 mm.
- Standard: non-rising pin (hole in bottom tip for easy removal).
- Optional: fixed pin, non-removable pin (NRP) or with security pin.
- Supplied with:
 - For steel doors: 1 pair of hinge & 16 pcs flat head & countersunk machine screws (10-24 x 1/2").
 - For wood doors: 1 pair of hinge & 16 pcs flat head and countersunk wood screws (#10 x 1 1/4").
- Standard finish: satin stainless steel (BHMA finish code # 630).
- Other finishes are available upon request.

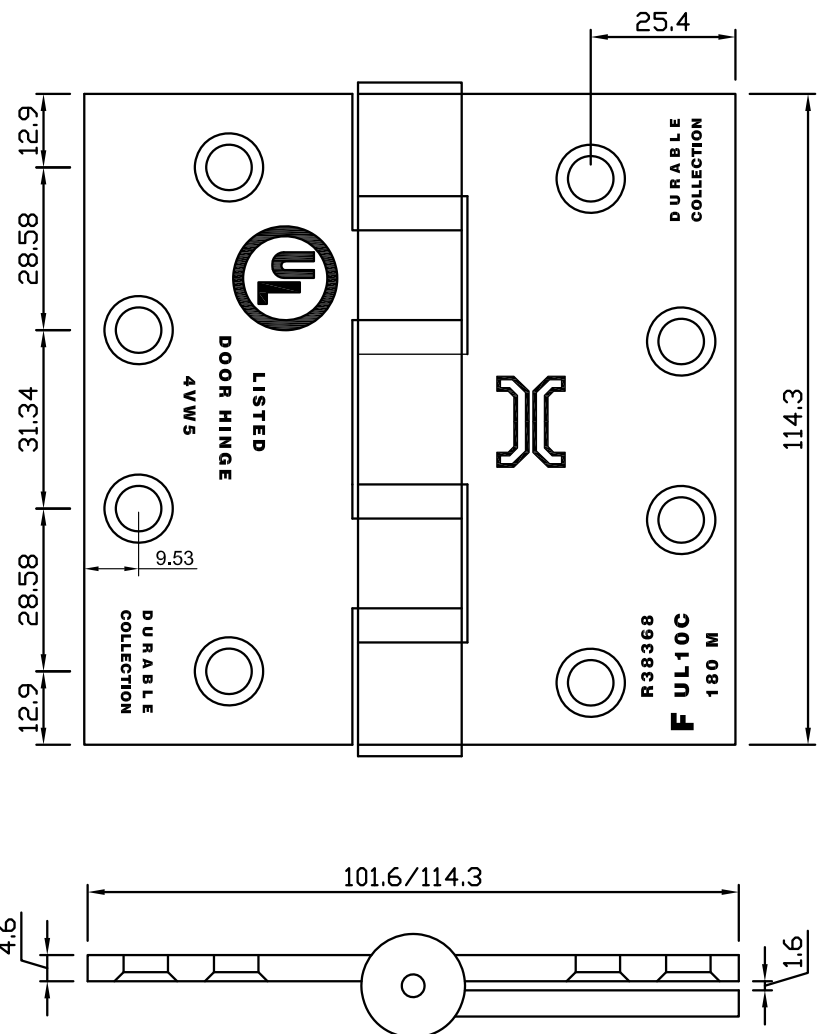


**ITEM CODE: DURABLE BB4.54.54.6 & DURABLE BB4.544.6
STAINLESS STEEL FULL MORTISE 4 BALL BEARING HINGES TYPE**



FEATURES:

- Area of application: Wooden or metal doors.
- Base material: Stainless steel EN 1.4301 (type 304).
- Available in stainless steel EN 1.4401 (type SUS316).
- UL listed and examined to UL10C. UL unique file #: GWZQ.R38368, suitable for fire rated up to and including 3 hours.
- Template hinge dimensions, screw hole location and tolerance in accordance with ANSI standard A156.7.
- Hinge meets the requirement of NFPA80-2013.
- Square corners. Optional round corners (radius 6.4 mm or 16 mm).
- Clear/free gap: 1.6 mm.
- Standard: non-rising pin (hole in bottom tip for easy removal).
- Optional: fixed pin, non-removable pin (NRP) or with security pin.
- Supplied with:
 - For steel doors: 1 pair of hinge & 16 pcs flat head & countersunk machine screws (12-24 x 1/2").
 - For wood doors: 1 pair of hinge & 16 pcs flat head & countersunk wood screws (#12 x 1 1/4")
- Standard finish: satin stainless steel (BHMA finish code # 630).
- Other finishes are available upon request.

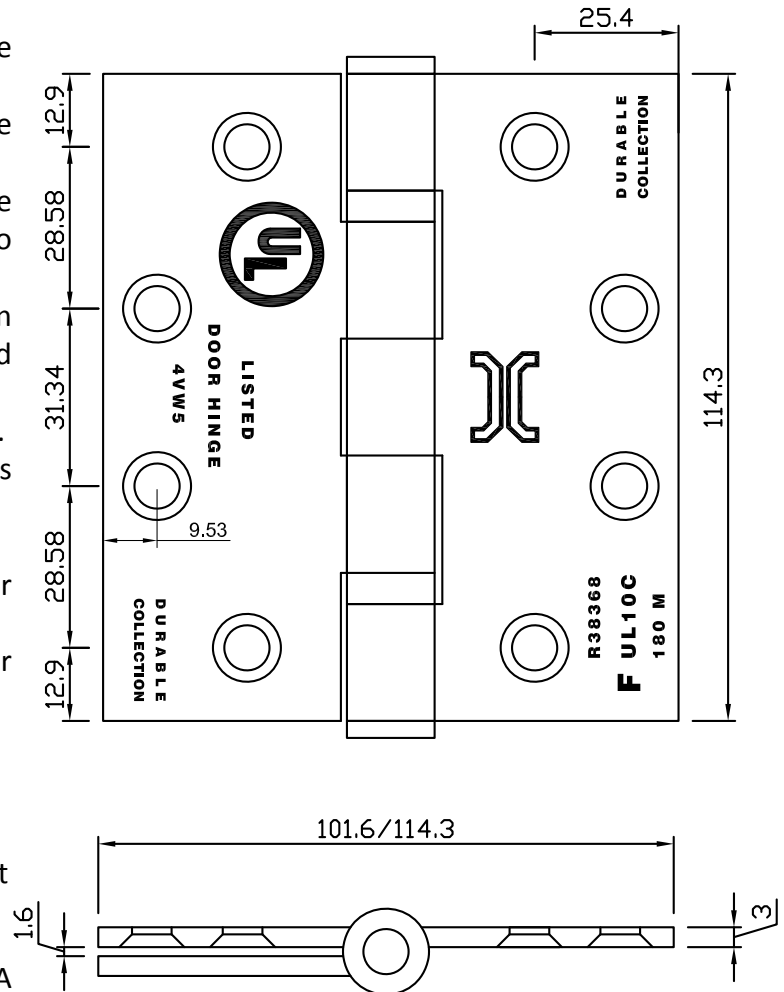


ITEM CODE: DURABLE BB4.54.53 & DURABLE BB4.543
STAINLESS STEEL FULL MORTISE 2 BALL BEARING HINGES TYPE



FEATURES:

- Area of application: Wooden or metal doors.
- Base material: Stainless steel EN 1.4301 (type 304).
- Available in stainless steel EN 1.4401 (type SUS316).
- UL listed and examined to UL10C. UL unique file #: GWZQ.R38368, suitable for fire rated up to and including 3 hours.
- Template hinge dimensions, screw hole location and tolerance in accordance with ANSI standard A156.7.
- Hinge meets the requirement of NFPA80-2013.
- Square corners. Optional round corners (radius 6.4 mm or 16 mm).
- Clear/free gap: 1.6 mm.
- Standard: non-rising pin (hole in bottom tip for easy removal).
- Optional: fixed pin, non-removable pin (NRP) or with security pin.
- Supplied with:
 - For steel doors: 1 pair of hinge & 16 pcs flat head & countersunk machine screws (12-24 x 1/2").
 - For wood doors: 1 pair of hinge & 16 pcs flat head & countersunk wood screws (#12 x 1 1/4").
- Standard finish: satin stainless steel (BHMA finish code # 630).
- Other finishes are available upon request.

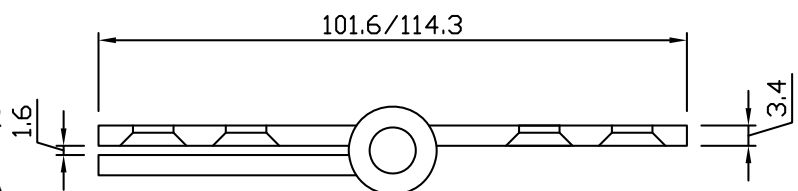
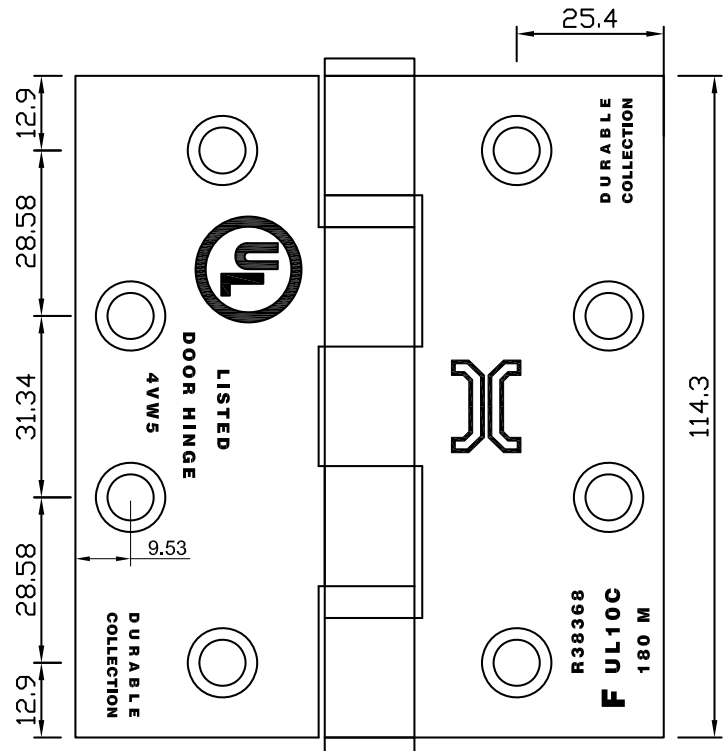


**ITEM CODE: DURABLE BB4.54.53.4 & DURABLE BB4.543.4
STAINLESS STEEL FULL MORTISE 2 BALL BEARING HINGES TYPE**



FEATURES:

- Area of application: Wooden or metal doors.
- Base material: Stainless steel EN 1.4301 (type 304).
- Available in stainless steel EN 1.4401 (type SUS316).
- UL listed and examined to UL10C. UL unique file #: GWZQ.R38368, suitable for fire rated up to and including 3 hours.
- Template hinge dimensions, screw hole location and tolerance in accordance with ANSI standard A156.7.
- Hinge meets the requirement of NFPA80-2013.
- Square corners. Optional round corners (radius 6.4 mm or 16 mm).
- Clear/free gap: 1.6 mm.
- Standard: non-rising pins (hole in bottom tip for easy removal).
- Optional: fixed pin, non-removable pin (NRP) or with security pin.
- Supplied with:
 - For steel doors: 1 pair of hinge & 16 pcs flat head & countersunk machine screws (12-24 x 1/2").
 - For wood doors: 1 pair of hinge & 16 pcs flat head & countersunk wood screws (#12 x 1 1/4").
- Standard finish: satin stainless steel (BHMA finish code # 630).
- Other finishes are available upon request.

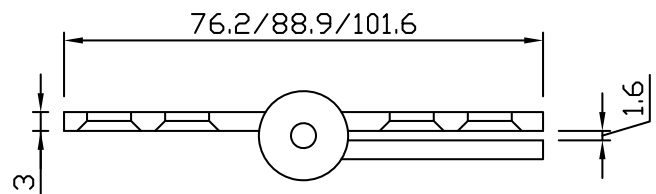
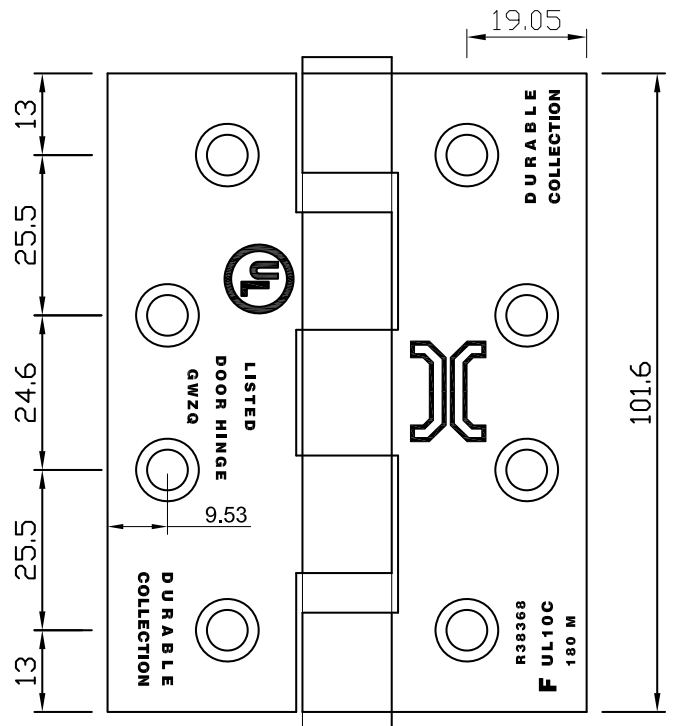


**ITEM CODE: DURABLE BB433, DURABLE BB43.53 & DURABLE BB443
STAINLESS STEEL FULL MORTISE 2 BALL BEARING HINGES TYPE**



FEATURES:

- Area of application: Wooden or metal doors.
- Base material: Stainless steel EN 1.4301 (type 304).
- Available in stainless steel EN 1.4401 (type SUS316).
- UL listed and examined to UL10C. UL unique file #: GWZQ.R38368, suitable for fire rated up to and including 3 hours.
- Template hinge dimensions, screw hole location and tolerance in accordance with ANSI standard A156.7.
- Hinge meets the requirement of NFPA80-2013.
- Square corners. Optional round corners (radius 6.4 mm or 16 mm).
- Clear/free gap: 1.6 mm.
- Standard: non-rising pin (hole in bottom tip for easy removal).
- Optional: fixed pin, non-removable pin (NRP) or with security pin.
- Supplied with:
 - For steel doors: 1 pair of hinge & 16 pcs flat head & countersunk flat head machine screws (10-24 x 1/2").
 - For wood doors: 1 pair of hinge & 16 pcs flat head and countersunk wood screws (#10 x 1 1/4").
- Standard finish: satin stainless steel (BHMA finish code # 630).
- Other finishes are available upon request.

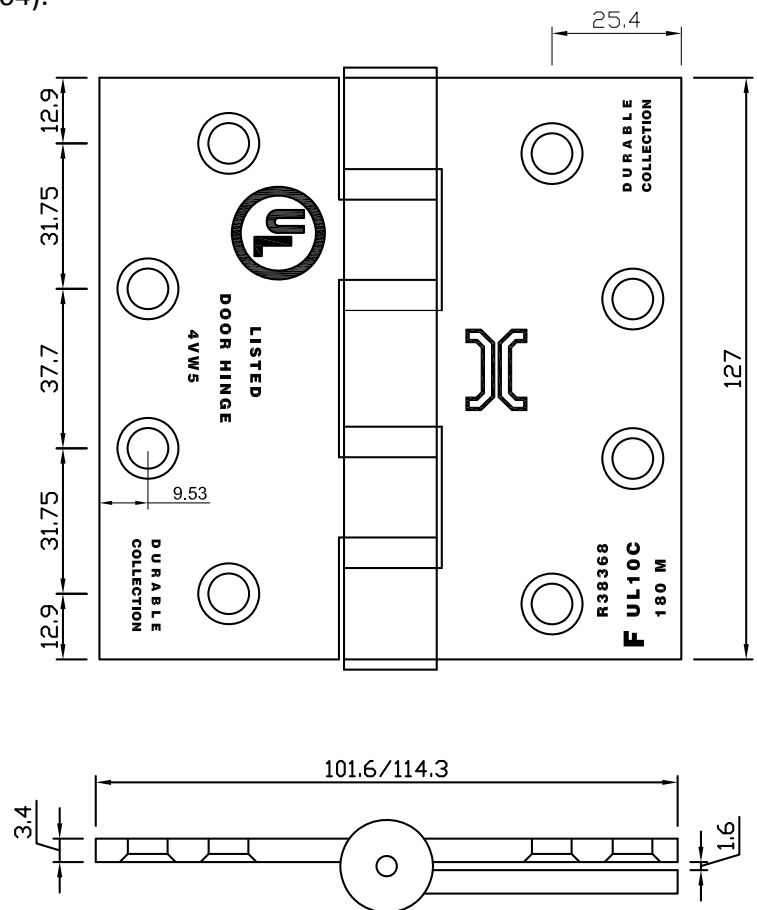


ITEM CODE: DURABLE BB543.4 & DURABLE BB54.53.4
STAINLESS STEEL FULL MORTISE 4 BALL BEARING HINGES TYPE



FEATURES:

- Area of application: Wooden or metal doors.
- Base material: Stainless steel EN 1.4301 (type 304).
- Available in stainless steel EN 1.4401 (type SUS316).
- UL listed and examined to UL10C. UL unique file #: GWZQ.R38368, suitable for fire rated up to and including 3 hours.
- Template hinge dimensions, screw hole location and tolerance in accordance with ANSI standard A156.7.
- Hinge meets the requirement of NFPA80-2013.
- Square corners. Optional round corners (radius 6.4 mm or 16 mm).
- Clear/free gap: 1.6 mm.
- Standard: non-rising pins (hole in bottom tip for easy removal).
- Optional: fixed pin, non-removable pin (NRP) or with security pin.
- Supplied with:
 - For steel doors: 1 pair of hinge & 16 pcs flat head & countersunk machine screws (12-24 x 1/2").
 - For wood doors: 1 pair of hinge & 16 pcs flat head & countersunk wood screws (#12 x 1 1/4").
- Standard finish: satin stainless steel (BHMA finish code # 630).
- Other finishes are available upon request.



**ITEM CODE: DURABLE BB544.6, DURABLE BB54.54.6 &
DURABLE BB554.6
STAINLESS STEEL FULL MORTISE 4 BALL BEARING
HINGES TYPE**



FEATURES:

- Area of application: Wooden or metal doors.
- Base material: Stainless steel EN 1.4301 (type 304).
- Available in stainless steel EN 1.4401 (type SUS316).
- UL listed and examined to UL10C. UL unique file #: GWZQ.R38368, suitable for fire rated up to and including 3 hours.
- Template hinge dimensions, screw hole location and tolerance in accordance with ANSI standard A156.7.
- Hinge meets the requirement of NFPA80-2013.
- Square corners. Optional round corners (radius 6.4 mm or 16 mm).
- Clear/free gap: 1.6 mm.
- Standard: non-rising pin (hole in bottom tip for easy removal).
- Optional: fixed pin, non-removable pin (NRP) or with security pin.
- Supplied with:
 - For steel doors: 1 pair of hinge & 16 pcs flat head & countersunk machine screws (12-24 x 1/2").
 - For wood doors: 1 pair of hinge & 16 pcs flat head & countersunk wood screws (#12 x 1 1/4").
- Standard finish: satin stainless steel (BHMA finish code # 630).
- Other finishes are available upon request.

